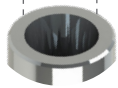


Análogo

100712



Ø2.72mm



Rosca M1.6

Ângulação Interna de 16°



**Transfer
mold. Aberta**

200712A



**Transfer
mold. Fechada**

200712B



Cicatrizador



Ø3.5

300712B	H2mm
300712C	H3mm
300712D	H4mm
300712E	H5mm
300712F	H6mm

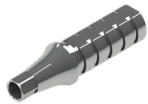


Cicatrizador

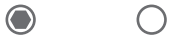


Ø4.5

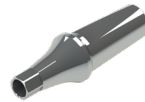
300713B	H2mm
300713C	H3mm
300713D	H4mm
300713E	H5mm
300713F	H6mm



**Pilar
Provisório**



400712C	400712S	H1mm
40712CB	40712SB	H2mm
40712CC	40712SC	H3mm
40712CD	40712SD	H4mm



**Pilar
Definitivo**

500712A	H1mm
500712B	H2mm
500712C	H3mm
500712D	H4mm
500712E	H5mm
500712F	H6mm

Pilar Definitivo - Âng. 15°



50712AG	H1mm
50712BG	H2mm
50712CG	H3mm

Pilar Definitivo - Âng. 25°

50712AH	H1mm
50712BH	H2mm
50712CH	H3mm



**Ucla Base
Metálica**



700712C	700712S	H1mm
70712CB	70712SB	H2mm
70712CC	70712SC	H3mm



**Mini Pilar
Cônico**



800712A	H1mm
800712B	H2mm
800712C	H3mm
800712D	H4mm
800712E	H5mm
800712F	H6mm



Mini Pilar - Âng. 17°

80712BG	H2mm
80712CG	H3mm
80712DG	H4mm



Mini Pilar - Âng. 30°



80712BH	H2mm
80712CH	H3mm
80712DH	H4mm



**Pilar
O'Ring**



900712A	H1mm
900712B	H2mm
900712C	H3mm
900712D	H4mm
900712E	H5mm
900712F	H6mm



**Parafuso
de Fixação**

MI6HSI

