

Análogo

100110



Ø5.0mm

3.3mm  
Hex.

Rosca M2.5



Transfer mold.  
Aberta  
200110A



Transfer mold.  
Fechada  
200110B



Cicatrizador



300110B	H2mm
300110C	H3mm
300110D	H4mm
300110E	H5mm
300110F	H6mm



Pilar  
Provisório

- 400110C
- 400110S



Ucla  
Plástica

- 600110C
- 600110S



Ucla  
Base Metálica

- 700110C
- 700110S



Mini pilar  
Cônico



800110A	H1mm
800110B	H2mm
800110C	H3mm
800110D	H4mm
800110E	H5mm
800110F	H6mm



Mini Pilar - Âng. 17°



80110BG	H2mm
80110CG	H3mm
80110DG	H4mm



Mini Pilar - Âng. 30°

80110CH	H3mm
80110DH	H4mm



Parafuso  
de Fixação

- M25HX
- M25QU



Análogo

100102



Ø3.3mm

2.37mm  
Hex.

1.0mm

Rosca M1.8



Transfer mold.  
Aberta  
200102A



Transfer mold.  
Fechada  
200102B



Cicatrizador



300102B	H2mm
300102C	H3mm
300102D	H4mm
300102E	H5mm
300102F	H6mm



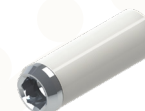
Pilar  
Provisório

- 400102C
- 400102S



Ucla  
Plástica

- 600102C
- 600102S



Ucla  
Base Metálica

- 700102C
- 700102S



Mini pilar  
Cônico



800102A	H1mm
800102B	H2mm
800102C	H3mm
800102D	H4mm
800102E	H5mm
800102F	H6mm



Mini Pilar - Âng. 17°



80102BG	H2mm
80102CG	H3mm
80102DG	H4mm



Mini Pilar - Âng. 30°

80102CH	H3mm
80102DH	H4mm



Pilar  
O'ring



900102A	H1mm
900102B	H2mm
900102C	H3mm
900102D	H4mm
900102E	H5mm
900102F	H6mm



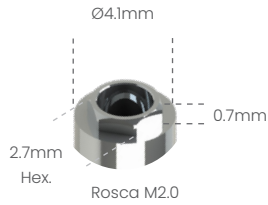
Parafuso  
de Fixação

- M18HX
- M18QU



Possibilita a técnica de Plataforma Switching com o Sistema HE 5.0 3i®

**Análogo**  
100105



**Transfer mold. Aberta**  
200105A



**Transfer mold. Fechada**  
200105B



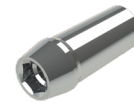
**Cicatrizador Tampa**  
301105



**Cicatrizador**



300105B	H2mm
300105C	H3mm
300105D	H4mm
300105E	H5mm
300105F	H6mm



**Pilar Definitivo**

500105A	H1mm
500105B	H2mm
500105C	H3mm
500105D	H4mm



**Pilar Provisório**

- 400105C
- 400105S



**Ucla Plástica**

- 600105C
- 600105S



**Ucla Base Metálica**

- 700105C
- 700105S



**Mini pilar Cônico**



800105A	H1mm
800105B	H2mm
800105C	H3mm
800105D	H4mm
800105E	H5mm
800105F	H6mm



**Pilar Definitivo Ang. 15°**

50105AG	H1mm
50105BG	H2mm
50105CG	H3mm



**Pilar Definitivo Ang. 25°**

50105AH	H1mm
50105BH	H2mm
50105CH	H3mm



**Mini Pilar - Âng. 17°**

80105BG	H2mm
80105CG	H3mm
80105DG	H4mm



**Mini Pilar - Âng. 30°**

80105CH	H3mm
80105DH	H4mm



**Pilar O'ring**



900105A	H1mm
900105B	H2mm
900105C	H3mm
900105D	H4mm
900105E	H5mm
900105F	H6mm



**Mini pilar Esteticone**



801004A	H1mm
801004B	H2mm
801004C	H3mm
801004D	H4mm
801004E	H5mm
801004F	H6mm



**Parafuso de Fixação**

- M20HX
- M20QU

