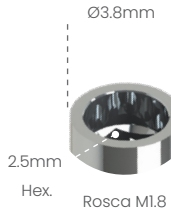


**Análogo**  
100316



**Transfer mold. Aberta**  
200316A



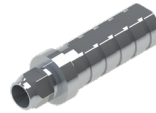
**Transfer mold. Fechada**  
200316B



Cicatrizador



300307B	H2mm
300307C	H3mm
300307D	H4mm
300307E	H5mm
300307F	H6mm



**Pilar Provisório**

- 400316C
- 400316S

Possibilita a técnica de Plataforma Switching com o Sistema HI 4.5/5.0 SIN\* e Sistema HI 3.75 a 5.0 Conexão\*



**Ucla Plástica**

- 600316C
- 600316S



**Ucla Base Metálica**

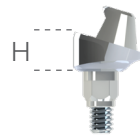
- 700316C
- 700316S



**Mini pilar Cônico**

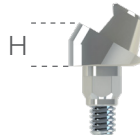


800316A	H1mm
800316B	H2mm
800316C	H3mm
800316D	H4mm
800316E	H5mm
800316F	H6mm



**Mini Pilar - Âng. 17°**

80316BG	H2mm
80316CG	H3mm
80316DG	H4mm



**Mini Pilar - Âng. 30°**

80316CH	H3mm
80316DH	H4mm



**Pilar O'Ring**



900316A	H1mm
900316B	H2mm
900316C	H3mm
900316D	H4mm
900316E	H5mm
900316F	H6mm



**Parafuso de Fixação**

- M18HCN
- M18QCN

