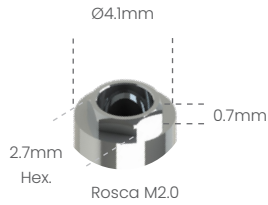


Possibilita a técnica de Plataforma Switching com o Sistema HE 5.0 3i®

**Análogo**  
100105



**Transfer mold. Aberta**  
200105A



**Transfer mold. Fechada**  
200105B



**Cicatrizador**



300105B	H2mm
300105C	H3mm
300105D	H4mm
300105E	H5mm
300105F	H6mm

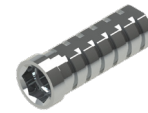


**Cicatrizador Tampa**  
301105



**Pilar Definitivo**

500105A	H1mm
500105B	H2mm
500105C	H3mm
500105D	H4mm



**Pilar Provisório**

- 400105C
- 400105S



**Ucla Plástica**

- 600105C
- 600105S



**Ucla Base Metálica**

- 700105C
- 700105S



**Mini pilar Cônico**



800105A	H1mm
800105B	H2mm
800105C	H3mm
800105D	H4mm
800105E	H5mm
800105F	H6mm



**Pilar Definitivo Ang. 15°**

50105AG	H1mm
50105BG	H2mm
50105CG	H3mm



**Pilar Definitivo Ang. 25°**

50105AH	H1mm
50105BH	H2mm
50105CH	H3mm



**Mini Pilar - Âng. 17°**

80105BG	H2mm
80105CG	H3mm
80105DG	H4mm



**Mini Pilar - Âng. 30°**

80105CH	H3mm
80105DH	H4mm



**Pilar O'ring**



900105A	H1mm
900105B	H2mm
900105C	H3mm
900105D	H4mm
900105E	H5mm
900105F	H6mm



**Mini pilar Esteticone**



801004A	H1mm
801004B	H2mm
801004C	H3mm
801004D	H4mm
801004E	H5mm
801004F	H6mm



**Parafuso de Fixação**

- M20HX
- M20QU



Análogo

100102



Ø3.3mm



2.37mm  
Hex.

Rosca M1.8



Transfer mold.  
Aberta

200102A



Transfer mold.  
Fechada

200102B



Cicatrizador



300102B H2mm

300102C H3mm

300102D H4mm

300102E H5mm

300102F H6mm



Pilar  
Provisório

● 400102C

○ 400102S



Ucla  
Plástica

● 600102C

○ 600102S



Ucla  
Base Metálica

● 700102C

○ 700102S



Mini pilar  
Cônico



800102A H1mm

800102B H2mm

800102C H3mm

800102D H4mm

800102E H5mm

800102F H6mm

