



**COMPONENTES**

*Confie e use!*

**CATÁLOGO 2024**



**COMPONENTES**

*Confie e use!*

## Quem somos

A **RP Componentes** é uma empresa brasileira com mais de 16 anos no mercado de componentes para próteses sobre implantes. Todos os componentes distribuídos pela **RP** possuem características de acoplamento ideais para ter uma conexão segura com os sistemas de implantes.

Para comprovação de sua segurança, eficácia e qualidade, foram realizados testes práticos, mecânicos e biológicos, assegurando que possuem resistência e estabilidade para exercer a função que foram indicados.

Todos os produtos comercializados pela **RP Componentes** são registrados e liberados pela **ANVISA**.

## Missão, visão e valores



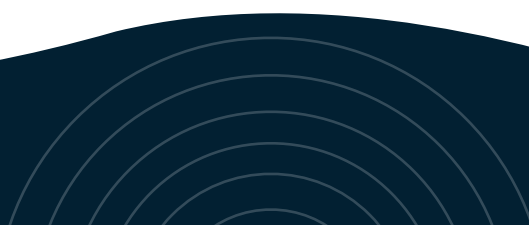
Fornecer produtos com qualidade garantida e certificada.



Apresentar soluções inovadoras, visando atender as necessidades dos profissionais do segmento odontológico.



Determinação e garra  
Honestidade e ética  
Equilíbrio Emocional  
Humildade  
Disciplina



## Cone Morse

Utilização	Pág.	Utilização	Pág.
Astra Tech® - Sistema CM 3.5/4.0 .....	07	Pross® - Sistema CM 3.5/3.75/4.0/4.3/5.0 .....	23
BioConec® - Sistema CM 3.5/4.3/5.0 .....	08	Signo Vinces® - Sistema CM 3.3/3.8/4.5/4.6 .....	24
Conexão® - Sistema CM 3.5/3.75/4.0 .....	09	SIN® SW - Sistema CM 3.8/4.5/5.5 .....	25
DentFix® - Sistema CM 3.5/3.75/4.3/5.0 .....	10	Singular® - Sistema CM 3.5/3.75/4.0/4.3/5.0 .....	26
DentoFlex® - Sistema CM 3.5/3.75/4.0/4.25/5.0 .....	11	Systhex® - Sistema CM 3.5/4.3/5.0 Avantt .....	27
Derig® - Sistema CMH 3.3/3.5/3.75/4.3 .....	12	Straumann® NC - Sistema NC 3.3 .....	28
Derig® - Sistema CMI 3.3 .....	13	Straumann® RC - Sistema RC 4.1 .....	29
DSP® - Sistema CM 3.5/3.75/3.8/4.0/4.3/4.5/5.0 .....	14	Straumann® RN - Sistema RN 4.8 .....	30
Implacil de Bortoli® - Sistema CM 3.5/4.3/5.0 .....	15	Straumann® WN - Sistema WN 6.5 .....	31
INP® - Sistema CM 3.3/3.8/4.3/5.0 .....	16	Straumann® RB/WB - Sistema RB/WB 3.5 A 6.5 .....	32
IntraOss® - Sistema CM 3.5/3.75/4.0/4.3 .....	17	Titaniumfix® - Sistema CM 3.5/4.0 .....	33
Neodent® - Neodent CM 3.5/4.3/5.0 .....	18	Mult Unit® - Sistema 4.8 .....	34
Neodent® GM - Sistema GM 3.5/3.75/4.0/4.3/5.0/6.0 .....	19	MIS® CI - Sistema CM 3.75/4.2 .....	34
Nobel Biocare® CC - Sistema CM 3.0 CC .....	20	Universal .....	35
Nobel Biocare NP® - Sistema CM 3.5 NP .....	21	GT .....	35
Nobel Biocare® RP - Sistema CM 4.3/5.0 RP .....	22		

## Conexão Externa

Utilização	Pág.	Utilização	Pág.
3i® - Sistema HE 3.25 .....	37	Neodent® - Sistema HE 3.3/3.5 .....	56
BioConec® - BioHE 3.75/4.1 .....	38	Neodent® - Sistema HE 4.5/5.0 .....	56
BioConec® - BioHE 3.3 .....	39	Neodent® - Sistema HE 3.75/4.0 .....	57
Bionnovation® - Sistema HE 3.3 .....	39	Pi Branemark® - Sistema HE 4.1 .....	58
Bionnovation® - Sistema HE 3.3/3.75/4.0/5.0 .....	40	Pi Branemark® - Sistema HE 3.3 .....	59
Bionnovation® - Sistema HE 5.0 .....	41	Pross® - Sistema HE 3.75/4.0/4.3/5.0 .....	60
Conexão® - Sistema HE 3.3/3.5 .....	41	Pross® - Sistema HE 3.5 .....	61
Conexão® - Sistema HE 3.75/4.0/5.0 .....	42	Signo Vinces® - Sistema HE 5.0/5.5 .....	61
DentFix® - Sistema HE 3.3 .....	43	Signo Vinces® - Sistema HE 3.75/4.0/4.1/4.6 .....	62
DentFix® - Sistema HE 3.5/3.75/4.0/5.0 .....	44	Signo Vinces® - Sistema HE 3.3/3.25/3.8 .....	63
Dentoflex® - Sistema HE 3.25/3.6/3.75/4.0/4.3/4.5/5.0/6.0 .....	45	SIN® - Sistema HE 3.4/3.5 .....	63
Derig® - Sistema HE 3.3 .....	46	SIN® - Sistema HE 3.25/3.75/4.0/4.5/5.0 .....	64
Derig® - Sistema HE 3.75/5.0/5.5 .....	47	Singular® - Sistema HE 3.75/4.0/4.3/5.0 .....	65
DSP® - Sistema HE 3.3/3.5/3.8/3.75/4.0/4.3/4.5/5.0 .....	48	Singular® - Sistema HE 3.3/3.5 .....	66
DSP® - Sistema HE 3.3 .....	49	Systhex® - Sistema HE 3.3 .....	66
Implacil de Bortoli® - Sistema HE 3.3/3.5 .....	49	Systhex® - Sistema HE 3.5/3.75/4.0 .....	67
Implus - Baumer® - Sistema HE 3.75/4.0/5.0 .....	50	Systhex® - Sistema HE 4.5/5.0 .....	68
Implus - Baumer® - Sistema HE 3.3/3.5 .....	51	Restore® - Sistema HE 3.3 .....	68
INP® - Sistema HE 3.5/4.0 .....	52	Restore® - Sistema HE 5.0 .....	69
INP® - Sistema HE 5.0/6.0 .....	53	Titanium Fix® - Sistema HE 3.3 .....	69
IntraOss® - Sistema HE 3.25/3.4 .....	53	Titanium Fix® - Sistema HE 5.0 .....	70
IntraOss® - Sistema HE 3.25/3.5/3.75/4.0/4.1/4.3 .....	54	Mult Unit® - Sistema 4.8 .....	71
Medens® - Sistema HE 3.5/4.0/5.0 .....	55		

## Conexão Interna

Utilização	Pág.	Utilização	Pág.
3i® Certain - Sistema HI 3.4 .....	73	SIN® - Sistema HI 3.8 .....	80
3i® Certain - Sistema HI 4.1 .....	73	Systhex® - Sistema HI 3.75/4.0/4.3/5.0 .....	80
Conexão® - Sistema HI 3.75/4.0/4.3/5.0 .....	74	Titanium Fix® - Sistema HI 3.75/4.0 .....	81
Dentoflex® - Sistema HI 3.5 A 5.0 .....	74	MIS® - Sistema HI 3.3 .....	81
DSP® - Sistema HI 3.8/4.0/4.3/4.5/5.0 .....	75	MIS® Seven - Sistema HI 3.75/4.2 .....	82
DSP® - Sistema HI 3.7/4.0/4.5/5.0 .....	75	Mult Unit - Sistema 4.8 .....	82
Medens/Emfils® - Sistema HI 3.3/4.0/5.0 .....	76	Esteticone - Sistema 4.8 .....	83
Implacil de Bortoli® - Sistema HI 3.3/3.5 - HI Maestro 3.5/4.0/5.0 .....	77	Uclafix .....	83
Implacil de Bortoli® - Sistema HI 3.75/4.0/4.3/4.75/5.0 .....	77	Overdenture .....	84
INP® Summalis - Sistema HI 3.5/4.0/5.0 .....	78	Instrumental - Chave digital e torquímetro .....	85
INP® Conus - Sistema HI 3.5/4.0 .....	78	Kits - Kit Protético Plus .....	86
IntraOss® - Sistema HI 3.8/4.5/5.5 .....	79	Kits - Kit Chaves .....	87
Neodent® Titamax II Plus - Sistema HI 3.75/4.3/5.0 .....	79		

As referências de produtos de uma empresa são essenciais para ajudar os consumidores a entender e se conectar com os produtos oferecidos.

A **RP Componentes** possui em sua linha referências que seguem uma lógica para facilitar e agilizar o entendimento, abaixo o significado de cada uma.

Para a maioria, os três primeiros números se referem ao tipo de produto.

- |     |   |                         |     |   |                           |
|-----|---|-------------------------|-----|---|---------------------------|
| 100 | ➔ | <i>Análogo</i>          | 600 | ➔ | <i>Ucla Plástica</i>      |
| 200 | ➔ | <i>Transfer</i>         | 700 | ➔ | <i>Ucla Base Metálica</i> |
| 300 | ➔ | <i>Cicatrizador</i>     | 800 | ➔ | <i>Mini Pilar</i>         |
| 400 | ➔ | <i>Pilar Provisório</i> | 900 | ➔ | <i>Pilar O'Ring</i>       |
| 500 | ➔ | <i>Pilar Definitivo</i> |     |   |                           |



Os três números seguintes se referem à família de produtos.

- |     |   |                          |     |   |                  |     |   |                       |
|-----|---|--------------------------|-----|---|------------------|-----|---|-----------------------|
| 703 | ➔ | <i>CM 3.5/4.3/5.0 ND</i> | 105 | ➔ | <i>HE 4.1 BR</i> | 209 | ➔ | <i>HI 3.75/4.3 UN</i> |
|-----|---|--------------------------|-----|---|------------------|-----|---|-----------------------|



## Outras famílias de produtos

- |     |   |                                     |
|-----|---|-------------------------------------|
| 004 | ➔ | <i>Componentes sobre Esteticone</i> |
| 005 | ➔ | <i>Componentes sobre Mini Pilar</i> |
| 007 | ➔ | <i>Componentes sobre Pilar GT</i>   |

A seguir dos seis números iniciais, há uma letra, ela tem o seguinte significado:

### Para Transfer indica se a moldeira é aberta ou fechada

- |                 |   |          |                  |   |          |
|-----------------|---|----------|------------------|---|----------|
| Moldeira Aberta | ➔ | <b>A</b> | Moldeira Fechada | ➔ | <b>B</b> |
|-----------------|---|----------|------------------|---|----------|



Para Cicatrizadores e Mini Pilares indica a altura de cinta:

Cinta 1mm ou 0.8mm para alguns sistemas → **A**

Cinta 2mm ou 1.5mm para alguns sistemas → **B**

Cinta 3mm ou 2.5mm para alguns sistemas → **C**

Cinta 4mm ou 3.5mm para alguns sistemas → **D**

Cinta 5mm ou 4.5mm para alguns sistemas → **E**

Cinta 6mm ou 5.5mm para alguns sistemas → **F**

Para qualquer tipo de pilar, indica se é componente com travamento ou sem.

Com Travamento Anti-Rotacional → **C**

Sem Travamento Rotacional → **S**

**Exemplo de código:**

**6 0 0 1 0 5 C**

Com travamento/ Anti-Rotacional  
 Família de produtos HE 4.1  
 Tipo de produto: Ucla Plástica

**7 0 7 0 3 C C**

Cinta 2.5mm  
 Com travamento/ Anti-Rotacional  
 Família de produtos CM ND  
 Tipo de produto: Ucla Base Metálica



Quando o pilar possui além do travamento ou não, altura de cinta, cai o primeiro zero, ou seja, 700 vira 70 e inclui-se a letra correspondente à cinta no final.



# Sistema Cone Morse

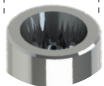


Análogo

100701



Ø3.5 / 4.0mm



Rosca M1.6



**Transfer mold. Aberta**  
200701A



**Transfer mold. Fechada**  
200701B



Cicatrizador



300701B	H2mm
300701C	H3mm
300701D	H4mm
300701E	H5mm
300701F	H6mm



**Pilar Provisório**

- 400701C
- 400701S



**Pilar Definitivo**

500701A	H1mm
500701B	H2mm
500701C	H3mm
500701D	H4mm



**Ucla Base Metálica**

- 700701C
- 700701S



**Mini pilar Cônico**



800701A	H1mm
800701B	H2mm
800701C	H3mm
800701D	H4mm
800701E	H5mm
800701F	H6mm



**Parafuso de Fixação**

MI6HAT



**Pilar definitivo - Âng. 15°**

50701AG	H1mm
50701BG	H2mm
50701CG	H3mm

**Pilar definitivo - Âng. 25°**

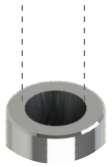
50701AH	H1mm
50701BH	H2mm
50701CH	H3mm



Análogo  
100703



Ø2.0mm



- Rosca M1.8
- Ângulação Interna de 11.5°



Transfer  
mold. Aberta  
200703A



Transfer  
mold. Fechada  
200703B



Cicatrizador  
Tampa  
301703



Cicatrizador



Ø3.3		Ø4.5	
300703A	H0.8mm	300704A	H0.8mm
300703B	H1.5mm	300704B	H1.5mm
300703C	H2.5mm	300704C	H2.5mm
300703D	H3.5mm	300704D	H3.5mm
300703E	H4.5mm	300704E	H4.5mm
300703F	H5.5mm	300704F	H5.5mm



Pilar  
Provisório



40703CA	40703SA	H0.8mm
40703CB	40703SB	H1.5mm
40703CC	40703SC	H2.5mm



Ucla Base  
Metálica



70703CA	70703SA	H0.8mm
70703CB	70703SB	H1.5mm
70703CC	70703SC	H2.5mm



Mini pilar  
Cônico



800703A	H0.8mm	800703D	H3.5mm
800703B	H1.5mm	800703E	H4.5mm
800703C	H2.5mm	800703F	H5.5mm



Mini Pilar - Âng. 17°



Mini Pilar - Âng. 30°

80703BG	H1.5mm	80703BH	H1.5mm
80703CG	H2.5mm	80703CH	H2.5mm
80703DG	H3.5mm	80703DH	H3.5mm



Pilar  
O'Ring



900703A	H0.8mm
900703B	H1.5mm
900703C	H2.5mm
900703D	H3.5mm
900703E	H4.5mm
900703F	H5.5mm



Pilar GT



801007A	H0.8mm	801007D	H3.5mm
801007B	H1.5mm	801007E	H4.5mm
801007C	H2.5mm	801007F	H5.5mm



Parafuso  
de Fixação  
M18HND



Pilar  
Universal



50708DA	Ø3.3 x 4mm - H0.8mm	50709DA	Ø4.5 x 4mm - H0.8mm	50708FA	Ø3.3 x 6mm - H0.8mm	50709FA	Ø4.5 x 6mm - H0.8mm
50708DB	Ø3.3 x 4mm - H1.5mm	50709DB	Ø4.5 x 4mm - H1.5mm	50708FB	Ø3.3 x 6mm - H1.5mm	50709FB	Ø4.5 x 6mm - H1.5mm
50708DC	Ø3.3 x 4mm - H2.5mm	50709DC	Ø4.5 x 4mm - H2.5mm	50708FC	Ø3.3 x 6mm - H2.5mm	50709FC	Ø4.5 x 6mm - H2.5mm
50708DD	Ø3.3 x 4mm - H3.5mm	50709DD	Ø4.5 x 4mm - H3.5mm	50708FD	Ø3.3 x 6mm - H3.5mm	50709FD	Ø4.5 x 6mm - H3.5mm
50708DE	Ø3.3 x 4mm - H4.5mm	50709DE	Ø4.5 x 4mm - H4.5mm	50708FE	Ø3.3 x 6mm - H4.5mm	50709FE	Ø4.5 x 6mm - H4.5mm
50708DF	Ø3.3 x 4mm - H5.5mm	50709DF	Ø4.5 x 4mm - H5.5mm	50708FF	Ø3.3 x 6mm - H5.5mm	50709FF	Ø4.5 x 6mm - H5.5mm

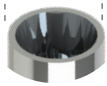




Análogo  
100705



Ø3.5 / 3.75 / 4.0mm



Rosca M1.6



Transfer  
mold. Aberta

200705A



Transfer  
mold. Fechada

200705B



Cicatrizador



Ø3.6

300700A	H0.8mm
300700B	H1.5mm
300700C	H2.5mm
300700D	H3.5mm
300700E	H4.5mm
300700F	H5.5mm

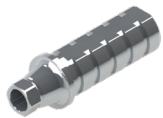


Cicatrizador



Ø4.5

300705A	H0.8mm
300705B	H1.5mm
300705C	H2.5mm
300705D	H3.5mm
300705E	H4.5mm
300705F	H5.5mm



Pilar  
Provisório

● 400705C ○ 400705S



Pilar  
Definitivo

500705A	H1.5mm
500705B	H2.5mm
500705C	H3.5mm
500705D	H4.5mm



Pilar Definitivo - Âng. 15°

50705AG	H1.5mm
50705BG	H2.5mm
50705CG	H3.5mm

Pilar Definitivo - Âng. 25°

50705AH	H1.5mm
50705BH	H2.5mm
50705CH	H3.5mm



Ucla Base  
Metálica

● 700705C ○ 700705S



Mini Pilar  
Cônico



800705A	H0.8mm
800705B	H1.5mm
800705C	H2.5mm
800705D	H3.5mm
800705E	H4.5mm
800705F	H5.5mm



Mini Pilar - Âng. 17°

80705CG	H2.5mm
80705DG	H3.5mm



Mini Pilar - Âng. 30°

80705DH	H3.5mm
80705EH	H4.5mm



Pilar  
O'Ring



900705A	H0.8mm
900705B	H1.5mm
900705C	H2.5mm
900705D	H3.5mm
900705E	H4.5mm
900705F	H5.5mm



Parafuso  
de Fixação

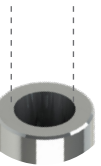
○ M16HCN



Análogo  
100703



Ø2.0mm



- Rosca M1.8
- Ângulação Interna de 11.5°



Transfer  
mold. Aberta  
200703A



Transfer  
mold. Fechada  
200703B



Cicatrizador  
Tampa  
301703



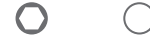
Cicatrizador  
200703A



Ø3.3		Ø4.5	
300703A	H0.8mm	300704A	H0.8mm
300703B	H1.5mm	300704B	H1.5mm
300703C	H2.5mm	300704C	H2.5mm
300703D	H3.5mm	300704D	H3.5mm
300703E	H4.5mm	300704E	H4.5mm
300703F	H5.5mm	300704F	H5.5mm



Pilar  
Provisório



40703CA	40703SA	H0.8mm
40703CB	40703SB	H1.5mm
40703CC	40703SC	H2.5mm



Ucla Base  
Metálica



70703CA	70703SA	H0.8mm
70703CB	70703SB	H1.5mm
70703CC	70703SC	H2.5mm



Mini pilar  
Cônico



800703A	H0.8mm	800703D	H3.5mm
800703B	H1.5mm	800703E	H4.5mm
800703C	H2.5mm	800703F	H5.5mm



Mini Pilar - Âng. 17°



Mini Pilar - Âng. 30°

80703BG	H1.5mm	80703BH	H1.5mm
80703CG	H2.5mm	80703CH	H2.5mm
80703DG	H3.5mm	80703DH	H3.5mm



Pilar  
O'Ring



900703A	H0.8mm
900703B	H1.5mm
900703C	H2.5mm
900703D	H3.5mm
900703E	H4.5mm
900703F	H5.5mm



Pilar GT



801007A	H0.8mm	801007D	H3.5mm
801007B	H1.5mm	801007E	H4.5mm
801007C	H2.5mm	801007F	H5.5mm



Parafuso  
de Fixação  
M18HND



Pilar  
Universal



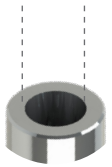
50708DA	Ø3.3 x 4mm - H0.8mm	50709DA	Ø4.5 x 4mm - H0.8mm	50708FA	Ø3.3 x 6mm - H0.8mm	50709FA	Ø4.5 x 6mm - H0.8mm
50708DB	Ø3.3 x 4mm - H1.5mm	50709DB	Ø4.5 x 4mm - H1.5mm	50708FB	Ø3.3 x 6mm - H1.5mm	50709FB	Ø4.5 x 6mm - H1.5mm
50708DC	Ø3.3 x 4mm - H2.5mm	50709DC	Ø4.5 x 4mm - H2.5mm	50708FC	Ø3.3 x 6mm - H2.5mm	50709FC	Ø4.5 x 6mm - H2.5mm
50708DD	Ø3.3 x 4mm - H3.5mm	50709DD	Ø4.5 x 4mm - H3.5mm	50708FD	Ø3.3 x 6mm - H3.5mm	50709FD	Ø4.5 x 6mm - H3.5mm
50708DE	Ø3.3 x 4mm - H4.5mm	50709DE	Ø4.5 x 4mm - H4.5mm	50708FE	Ø3.3 x 6mm - H4.5mm	50709FE	Ø4.5 x 6mm - H4.5mm
50708DF	Ø3.3 x 4mm - H5.5mm	50709DF	Ø4.5 x 4mm - H5.5mm	50708FF	Ø3.3 x 6mm - H5.5mm	50709FF	Ø4.5 x 6mm - H5.5mm



Análogo  
100703



Ø2.0mm



- Rosca M1.8
- Ângulação Interna de 11.5°



Transfer  
mold. Aberta  
200703A



Transfer  
mold. Fechada  
200703B



Cicatrizador  
Tampa  
301703



Cicatrizador  
300703A



Ø3.3		Ø4.5	
300703A	H0.8mm	300704A	H0.8mm
300703B	H1.5mm	300704B	H1.5mm
300703C	H2.5mm	300704C	H2.5mm
300703D	H3.5mm	300704D	H3.5mm
300703E	H4.5mm	300704E	H4.5mm
300703F	H5.5mm	300704F	H5.5mm



Pilar  
Provisório



40703CA	40703SA	H0.8mm
40703CB	40703SB	H1.5mm
40703CC	40703SC	H2.5mm



Ucla Base  
Metálica



70703CA	70703SA	H0.8mm
70703CB	70703SB	H1.5mm
70703CC	70703SC	H2.5mm



Mini pilar  
Cônico



800703A	H0.8mm	800703D	H3.5mm
800703B	H1.5mm	800703E	H4.5mm
800703C	H2.5mm	800703F	H5.5mm



Mini Pilar - Âng. 17°



Mini Pilar - Âng. 30°

80703BG	H1.5mm	80703BH	H1.5mm
80703CG	H2.5mm	80703CH	H2.5mm
80703DG	H3.5mm	80703DH	H3.5mm



Pilar  
O'Ring



900703A	H0.8mm
900703B	H1.5mm
900703C	H2.5mm
900703D	H3.5mm
900703E	H4.5mm
900703F	H5.5mm



Pilar GT



801007A	H0.8mm	801007D	H3.5mm
801007B	H1.5mm	801007E	H4.5mm
801007C	H2.5mm	801007F	H5.5mm



Parafuso  
de Fixação  
M18HND



Pilar  
Universal



50708DA	Ø3.3 x 4mm - H0.8mm	50709DA	Ø4.5 x 4mm - H0.8mm	50708FA	Ø3.3 x 6mm - H0.8mm	50709FA	Ø4.5 x 6mm - H0.8mm
50708DB	Ø3.3 x 4mm - H1.5mm	50709DB	Ø4.5 x 4mm - H1.5mm	50708FB	Ø3.3 x 6mm - H1.5mm	50709FB	Ø4.5 x 6mm - H1.5mm
50708DC	Ø3.3 x 4mm - H2.5mm	50709DC	Ø4.5 x 4mm - H2.5mm	50708FC	Ø3.3 x 6mm - H2.5mm	50709FC	Ø4.5 x 6mm - H2.5mm
50708DD	Ø3.3 x 4mm - H3.5mm	50709DD	Ø4.5 x 4mm - H3.5mm	50708FD	Ø3.3 x 6mm - H3.5mm	50709FD	Ø4.5 x 6mm - H3.5mm
50708DE	Ø3.3 x 4mm - H4.5mm	50709DE	Ø4.5 x 4mm - H4.5mm	50708FE	Ø3.3 x 6mm - H4.5mm	50709FE	Ø4.5 x 6mm - H4.5mm
50708DF	Ø3.3 x 4mm - H5.5mm	50709DF	Ø4.5 x 4mm - H5.5mm	50708FF	Ø3.3 x 6mm - H5.5mm	50709FF	Ø4.5 x 6mm - H5.5mm



Análogo  
100320



Ø3.5mm



Rosca M1.6



Transfer  
mold. Aberta  
200320A



Transfer  
mold. Fechada  
200320B



Cicatrizador



Ø3.6

300320B	H2mm
300320C	H3mm
300320D	H4mm
300320E	H5mm
300320F	H6mm

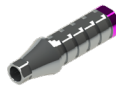


Cicatrizador



Ø5.0

300323B	H2mm
300323C	H3mm
300323D	H4mm
300323E	H5mm
300323F	H6mm



Pilar  
Provisório



40320CA	40320SA	H0.8mm
40320CB	40320SB	H1.5 mm
40320CC	40320SC	H2.5mm
40320CD	40320SD	H3.5mm



Pilar  
Definitivo

500320A	H0.8mm
500320B	H1.5mm
500320C	H2.5mm
500320D	H3.5mm

Pilar Definitivo – Âng. 15°



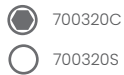
50320AG	H1.5mm
50320BG	H2.5mm
50320CG	H3.5mm

Pilar Definitivo – Âng. 25°

50320AH	H1.5mm
50320BH	H2.5mm
50320CH	H3.5mm



Ucla Base  
Metálica



700320C  
700320S



Mini Pilar  
Cônico



800320A	H0.8mm
800320B	H1.5mm
800320C	H2.5mm
800320D	H3.5mm
800320E	H4.5mm
800320F	H5.5mm



Mini Pilar – Âng. 17°

80320CG	H2.5mm
80320DG	H3.5mm



Mini Pilar – Âng. 30°

80320DH	H3.5mm
80320EH	H4.5mm



Cicatrizador  
Tampa  
301320



Parafuso  
de Fixação

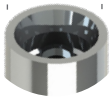
MI6HEB  
MI6UEB



Análogo  
100750



Ø3.5mm



Rosca M1.6



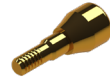
Transfer  
mold. Aberta  
200750A



Transfer  
mold. Fechada  
200750B



Cicatrizador  
Tampa  
301750



Cicatrizador



300750B	H2mm
300750C	H3.5mm
300750E	H5mm
300750F	H6mm



Pilar  
Provisório

400750C 400750S



Ucla Base  
Metálica

700750C  
700750S



Mini Pilar  
Cônico



800750A	H1mm
800750B	H2mm
800750C	H3mm
800750D	H4mm
800750E	H5mm
800750F	H6mm



Mini Pilar - Âng. 17°

80750BG	H2mm
80750CG	H3mm
80750DG	H4mm



Mini Pilar - Âng. 30°

80750CH	H3mm
80750DH	H4mm



Pilar O'Ring



900750B	H2mm
900750C	H3.5mm
900750E	H5mm
900750F	H6mm



Parafuso  
de Fixação



M16TNC

Prótese cimentada

Análogo  
CI



10750DD	Ø3.5 x 4mm
10750DF	Ø3.5 x 5.5mm
10750ED	Ø5 x 4mm
10750EF	Ø5 x 5.5mm



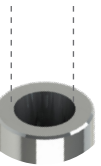
Pilar  
Definitivo CI

5750DDA	Ø3.5 x 4mm - H1mm	5750EDA	Ø5 x 4mm - H1mm
5750DDB	Ø3.5 x 4mm - H2mm	5750EDB	Ø5 x 4mm - H2mm
5750DDC	Ø3.5 x 4mm - H3mm	5750EDC	Ø5 x 4mm - H3mm
5750DFA	Ø3.5 x 5.5mm - H1mm	5750EFA	Ø5 x 5.5mm - H1mm
5750DFB	Ø3.5 x 5.5mm - H2mm	5750EFB	Ø5 x 5.5mm - H2mm
5750DFC	Ø3.5 x 5.5mm - H3mm	5750EFC	Ø5 x 5.5mm - H3mm

Análogo  
100703



Ø2.0mm



- Rosca M1.8
- Ângulação Interna de 11.5°



Transfer  
mold. Aberta  
200703A



Transfer  
mold. Fechada  
200703B



Cicatrizador  
Tampa  
301703



Cicatrizador



Ø3.3

Ø4.5

300703A	H0.8mm	300704A	H0.8mm
300703B	H1.5mm	300704B	H1.5mm
300703C	H2.5mm	300704C	H2.5mm
300703D	H3.5mm	300704D	H3.5mm
300703E	H4.5mm	300704E	H4.5mm
300703F	H5.5mm	300704F	H5.5mm



Pilar  
Provisório



40703CA	40703SA	H0.8mm
40703CB	40703SB	H1.5mm
40703CC	40703SC	H2.5mm



Ucla Base  
Metálica



70703CA	70703SA	H0.8mm
70703CB	70703SB	H1.5mm
70703CC	70703SC	H2.5mm



Mini pilar  
Cônico



800703A	H0.8mm	800703D	H3.5mm
800703B	H1.5mm	800703E	H4.5mm
800703C	H2.5mm	800703F	H5.5mm



Mini Pilar - Âng. 17°



Mini Pilar - Âng. 30°

80703BG	H1.5mm	80703BH	H1.5mm
80703CG	H2.5mm	80703CH	H2.5mm
80703DG	H3.5mm	80703DH	H3.5mm



Pilar  
O'Ring



900703A	H0.8mm
900703B	H1.5mm
900703C	H2.5mm
900703D	H3.5mm
900703E	H4.5mm
900703F	H5.5mm



Pilar GT



801007A	H0.8mm	801007D	H3.5mm
801007B	H1.5mm	801007E	H4.5mm
801007C	H2.5mm	801007F	H5.5mm



Parafuso  
de Fixação  
M18HND



Pilar  
Universal



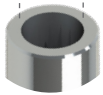
50708DA	Ø3.3 x 4mm - H0.8mm	50709DA	Ø4.5 x 4mm - H0.8mm	50708FA	Ø3.3 x 6mm - H0.8mm	50709FA	Ø4.5 x 6mm - H0.8mm
50708DB	Ø3.3 x 4mm - H1.5mm	50709DB	Ø4.5 x 4mm - H1.5mm	50708FB	Ø3.3 x 6mm - H1.5mm	50709FB	Ø4.5 x 6mm - H1.5mm
50708DC	Ø3.3 x 4mm - H2.5mm	50709DC	Ø4.5 x 4mm - H2.5mm	50708FC	Ø3.3 x 6mm - H2.5mm	50709FC	Ø4.5 x 6mm - H2.5mm
50708DD	Ø3.3 x 4mm - H3.5mm	50709DD	Ø4.5 x 4mm - H3.5mm	50708FD	Ø3.3 x 6mm - H3.5mm	50709FD	Ø4.5 x 6mm - H3.5mm
50708DE	Ø3.3 x 4mm - H4.5mm	50709DE	Ø4.5 x 4mm - H4.5mm	50708FE	Ø3.3 x 6mm - H4.5mm	50709FE	Ø4.5 x 6mm - H4.5mm
50708DF	Ø3.3 x 4mm - H5.5mm	50709DF	Ø4.5 x 4mm - H5.5mm	50708FF	Ø3.3 x 6mm - H5.5mm	50709FF	Ø4.5 x 6mm - H5.5mm



Análogo  
100714



Ø2.5mm



Rosca M1.8  
Ângulação Interna de 11.5°



Transfer  
mold. Aberta  
200714A



Transfer  
mold. Fechada  
200714B



Cicatrizador



Ø3.3		Ø4.5	
300703A	H0.8mm	300704A	H0.8mm
300703B	H1.5mm	300704B	H1.5mm
300703C	H2.5mm	300704C	H2.5mm
300703D	H3.5mm	300704D	H3.5mm
300703E	H4.5mm	300704E	H4.5mm
300703F	H5.5mm	300704F	H5.5mm



Ucla Base  
Metálica



70714CA



70714SA

H0.8mm

70714CB

70714SB

H1.5mm

70714CC

70714SC

H2.5mm



Mini Pilar  
Cônico



800703A	H0.8mm
800703B	H1.5mm
800703C	H2.5mm
800703D	H3.5mm
800703E	H4.5mm
800703F	H5.5mm



Mini Pilar - Âng. 17°

80714BG	H1.5mm
80714CG	H2.5mm
80714DG	H3.5mm



Mini Pilar - Âng. 30°

80714BH	H1.5mm
80714CH	H2.5mm
80714DH	H3.5mm

\*Componentes Sobre o Pilar GT Pág.08



Pilar  
O'Ring



900703A	H0.8mm
900703B	H1.5mm
900703C	H2.5mm
900703D	H3.5mm
900703E	H4.5mm
900703F	H5.5mm



Parafuso  
de Fixação

○ M18HND



Pilar GT



801007A	H0.8mm
801007B	H1.5mm
801007C	H2.5mm
801007D	H3.5mm
801007E	H4.5mm
801007F	H5.5mm

\*Componentes Sobre o Pilar Universal Pág.08



Pilar  
Universal



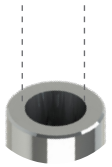
50708DA	Ø3.3 x 4mm - H0.8mm	50708FA	Ø3.3 x 6mm - H0.8mm	50709DA	Ø4.5 x 4mm - H0.8mm	50709FA	Ø4.5 x 6mm - H0.8mm
50708DB	Ø3.3 x 4mm - H1.5mm	50708FB	Ø3.3 x 6mm - H1.5mm	50709DB	Ø4.5 x 4mm - H1.5mm	50709FB	Ø4.5 x 6mm - H1.5mm
50708DC	Ø3.3 x 4mm - H2.5mm	50708FC	Ø3.3 x 6mm - H2.5mm	50709DC	Ø4.5 x 4mm - H2.5mm	50709FC	Ø4.5 x 6mm - H2.5mm
50708DD	Ø3.3 x 4mm - H3.5mm	50708FD	Ø3.3 x 6mm - H3.5mm	50709DD	Ø4.5 x 4mm - H3.5mm	50709FD	Ø4.5 x 6mm - H3.5mm
50708DE	Ø3.3 x 4mm - H4.5mm	50708FE	Ø3.3 x 6mm - H4.5mm	50709DE	Ø4.5 x 4mm - H4.5mm	50709FE	Ø4.5 x 6mm - H4.5mm
50708DF	Ø3.3 x 4mm - H5.5mm	50708FF	Ø3.3 x 6mm - H5.5mm	50709DF	Ø4.5 x 4mm - H5.5mm	50709FF	Ø4.5 x 6mm - H5.5mm



Análogo  
100703



Ø2.0 mm



- Rosca M1.8
- Ângulação Interna de 11.5°



Transfer  
mold. Aberta  
200703A



Transfer  
mold. Fechada  
200703B



Cicatrizador  
Tampa  
301703



Cicatrizador



Ø3.3		Ø4.5	
300703A	H0.8mm	300704A	H0.8mm
300703B	H1.5mm	300704B	H1.5mm
300703C	H2.5mm	300704C	H2.5mm
300703D	H3.5mm	300704D	H3.5mm
300703E	H4.5mm	300704E	H4.5mm
300703F	H5.5mm	300704F	H5.5mm



Pilar  
Provisório



40703CA	40703SA	H0.8mm
40703CB	40703SB	H1.5mm
40703CC	40703SC	H2.5mm



Ucla Base  
Metálica



70703CA	70703SA	H0.8mm
70703CB	70703SB	H1.5mm
70703CC	70703SC	H2.5mm



Mini pilar  
Cônico



800703A	H0.8mm	800703D	H3.5mm
800703B	H1.5mm	800703E	H4.5mm
800703C	H2.5mm	800703F	H5.5mm



Mini Pilar - Âng. 17°



Mini Pilar - Âng. 30°

80703BG	H1.5mm	80703BH	H1.5mm
80703CG	H2.5mm	80703CH	H2.5mm
80703DG	H3.5mm	80703DH	H3.5mm



Pilar  
O'Ring



900703A	H0.8mm
900703B	H1.5mm
900703C	H2.5mm
900703D	H3.5mm
900703E	H4.5mm
900703F	H5.5mm



Pilar GT



801007A	H0.8mm	801007D	H3.5mm
801007B	H1.5mm	801007E	H4.5mm
801007C	H2.5mm	801007F	H5.5mm



Parafuso  
de Fixação  
M18HND



Pilar  
Universal



50708DA	Ø3.3 x 4mm - H0.8mm	50709DA	Ø4.5 x 4mm - H0.8mm	50708FA	Ø3.3 x 6mm - H0.8mm	50709FA	Ø4.5 x 6mm - H0.8mm
50708DB	Ø3.3 x 4mm - H1.5mm	50709DB	Ø4.5 x 4mm - H1.5mm	50708FB	Ø3.3 x 6mm - H1.5mm	50709FB	Ø4.5 x 6mm - H1.5mm
50708DC	Ø3.3 x 4mm - H2.5mm	50709DC	Ø4.5 x 4mm - H2.5mm	50708FC	Ø3.3 x 6mm - H2.5mm	50709FC	Ø4.5 x 6mm - H2.5mm
50708DD	Ø3.3 x 4mm - H3.5mm	50709DD	Ø4.5 x 4mm - H3.5mm	50708FD	Ø3.3 x 6mm - H3.5mm	50709FD	Ø4.5 x 6mm - H3.5mm
50708DE	Ø3.3 x 4mm - H4.5mm	50709DE	Ø4.5 x 4mm - H4.5mm	50708FE	Ø3.3 x 6mm - H4.5mm	50709FE	Ø4.5 x 6mm - H4.5mm
50708DF	Ø3.3 x 4mm - H5.5mm	50709DF	Ø4.5 x 4mm - H5.5mm	50708FF	Ø3.3 x 6mm - H5.5mm	50709FF	Ø4.5 x 6mm - H5.5mm

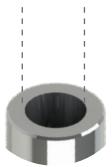




Análogo  
100703



Ø2.0 mm



- Rosca M1.8
- Ângulação Interna de 11.5°



Transfer  
mold. Aberta  
200703A



Transfer  
mold. Fechada  
200703B



Cicatrizador  
Tampa  
301703



Cicatrizador  
300703A



Ø3.3		Ø4.5	
300703A	H0.8mm	300704A	H0.8mm
300703B	H1.5mm	300704B	H1.5mm
300703C	H2.5mm	300704C	H2.5mm
300703D	H3.5mm	300704D	H3.5mm
300703E	H4.5mm	300704E	H4.5mm
300703F	H5.5mm	300704F	H5.5mm



Pilar  
Provisório



40703CA	40703SA	H0.8mm
40703CB	40703SB	H1.5mm
40703CC	40703SC	H2.5mm



Ucla Base  
Metálica



70703CA	70703SA	H0.8mm
70703CB	70703SB	H1.5mm
70703CC	70703SC	H2.5mm



Mini pilar  
Cônico



800703A	H0.8mm	800703D	H3.5mm
800703B	H1.5mm	800703E	H4.5mm
800703C	H2.5mm	800703F	H5.5mm



Mini Pilar - Âng. 17°



Mini Pilar - Âng. 30°

80703BG	H1.5mm	80703BH	H1.5mm
80703CG	H2.5mm	80703CH	H2.5mm
80703DG	H3.5mm	80703DH	H3.5mm



Pilar  
O'Ring



900703A	H0.8mm
900703B	H1.5mm
900703C	H2.5mm
900703D	H3.5mm
900703E	H4.5mm
900703F	H5.5mm



Pilar GT



801007A	H0.8mm	801007D	H3.5mm
801007B	H1.5mm	801007E	H4.5mm
801007C	H2.5mm	801007F	H5.5mm



Parafuso  
de Fixação  
818HND



Pilar  
Universal



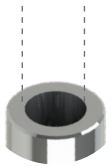
50708DA	Ø3.3 x 4mm - H0.8mm	50709DA	Ø4.5 x 4mm - H0.8mm	50708FA	Ø3.3 x 6mm - H0.8mm	50709FA	Ø4.5 x 6mm - H0.8mm
50708DB	Ø3.3 x 4mm - H1.5mm	50709DB	Ø4.5 x 4mm - H1.5mm	50708FB	Ø3.3 x 6mm - H1.5mm	50709FB	Ø4.5 x 6mm - H1.5mm
50708DC	Ø3.3 x 4mm - H2.5mm	50709DC	Ø4.5 x 4mm - H2.5mm	50708FC	Ø3.3 x 6mm - H2.5mm	50709FC	Ø4.5 x 6mm - H2.5mm
50708DD	Ø3.3 x 4mm - H3.5mm	50709DD	Ø4.5 x 4mm - H3.5mm	50708FD	Ø3.3 x 6mm - H3.5mm	50709FD	Ø4.5 x 6mm - H3.5mm
50708DE	Ø3.3 x 4mm - H4.5mm	50709DE	Ø4.5 x 4mm - H4.5mm	50708FE	Ø3.3 x 6mm - H4.5mm	50709FE	Ø4.5 x 6mm - H4.5mm
50708DF	Ø3.3 x 4mm - H5.5mm	50709DF	Ø4.5 x 4mm - H5.5mm	50708FF	Ø3.3 x 6mm - H5.5mm	50709FF	Ø4.5 x 6mm - H5.5mm



Análogo  
100703



Ø2.5mm



- Rosca M1.8
- Ângulação Interna de 11.5°



Transfer  
mold. Aberta  
200703A



Transfer  
mold. Fechada  
200703B



Cicatrizador  
Tampa  
301703



Cicatrizador



Ø3.3		Ø4.5	
300703A	H0.8mm	300704A	H0.8mm
300703B	H1.5mm	300704B	H1.5mm
300703C	H2.5mm	300704C	H2.5mm
300703D	H3.5mm	300704D	H3.5mm
300703E	H4.5mm	300704E	H4.5mm
300703F	H5.5mm	300704F	H5.5mm



Pilar  
Provisório



40703CA	40703SA	H0.8mm
40703CB	40703SB	H1.5mm
40703CC	40703SC	H2.5mm



Ucla Base  
Metálica



70703CA	70703SA	H0.8mm
70703CB	70703SB	H1.5mm
70703CC	70703SC	H2.5mm



Mini pilar  
Cônico



800703A	H0.8mm	800703D	H3.5mm
800703B	H1.5mm	800703E	H4.5mm
800703C	H2.5mm	800703F	H5.5mm



Mini Pilar - Âng. 17°



Mini Pilar - Âng. 30°

80703BG	H1.5mm	80703BH	H1.5mm
80703CG	H2.5mm	80703CH	H2.5mm
80703DG	H3.5mm	80703DH	H3.5mm



Pilar  
O'Ring



900703A	H0.8mm
900703B	H1.5mm
900703C	H2.5mm
900703D	H3.5mm
900703E	H4.5mm
900703F	H5.5mm



Pilar GT



801007A	H0.8mm	801007D	H3.5mm
801007B	H1.5mm	801007E	H4.5mm
801007C	H2.5mm	801007F	H5.5mm



Parafuso  
de Fixação  
M18HND



Pilar  
Universal



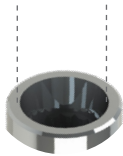
50708DA	Ø3.3 x 4mm - H0.8mm	50709DA	Ø4.5 x 4mm - H0.8mm	50708FA	Ø3.3 x 6mm - H0.8mm	50709FA	Ø4.5 x 6mm - H0.8mm
50708DB	Ø3.3 x 4mm - H1.5mm	50709DB	Ø4.5 x 4mm - H1.5mm	50708FB	Ø3.3 x 6mm - H1.5mm	50709FB	Ø4.5 x 6mm - H1.5mm
50708DC	Ø3.3 x 4mm - H2.5mm	50709DC	Ø4.5 x 4mm - H2.5mm	50708FC	Ø3.3 x 6mm - H2.5mm	50709FC	Ø4.5 x 6mm - H2.5mm
50708DD	Ø3.3 x 4mm - H3.5mm	50709DD	Ø4.5 x 4mm - H3.5mm	50708FD	Ø3.3 x 6mm - H3.5mm	50709FD	Ø4.5 x 6mm - H3.5mm
50708DE	Ø3.3 x 4mm - H4.5mm	50709DE	Ø4.5 x 4mm - H4.5mm	50708FE	Ø3.3 x 6mm - H4.5mm	50709FE	Ø4.5 x 6mm - H4.5mm
50708DF	Ø3.3 x 4mm - H5.5mm	50709DF	Ø4.5 x 4mm - H5.5mm	50708FF	Ø3.3 x 6mm - H5.5mm	50709FF	Ø4.5 x 6mm - H5.5mm



**Análogo**  
100720

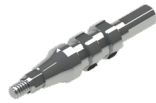


Ø2.0mm



Rosca M1.6

Ângulação de Interna de 16°



**Transfer mold. Aberta**

200720A



**Transfer mold. Fechada**

200720B



**Cicatrizador**



**Cicatrizador**

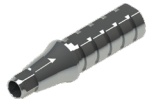


Ø3.3

300720A	H0.8mm
300720B	H1.5mm
300720C	H2.5mm
300720D	H3.5mm
300720E	H4.5mm
300720F	H5.5mm

Ø4.5

300721A	H0.8mm
300721B	H1.5mm
300721C	H2.5mm
300721D	H3.5mm
300721E	H4.5mm
300721F	H5.5mm



**Pilar Provisório**



40720CA	40720SA	H0.8mm
40720CB	40720SB	H1.5 mm
40720CC	40720SC	H2.5mm
40720CD	40720SD	H3.5mm



**Pilar Definitivo**

500720A	H0.8mm
500720B	H1.5mm
500720C	H2.5mm
500720D	H3.5mm
500720E	H4.5mm
500720F	H5.5mm



**Ucla Base Metálica**



**Mini Pilar Cônico**



800720A	H0.8mm
800720B	H1.5mm
800720C	H2.5mm
800720D	H3.5mm
800720E	H4.5mm
800720F	H5.5mm



**Mini Pilar - Âng. 17°**

80720BG	H1.5mm
80720CG	H2.5mm
80720DG	H3.5mm



**Mini Pilar - Âng. 30°**

80720BH	H1.5mm
80720CH	H2.5mm
80720DH	H3.5mm



**Parafuso de Fixação**

MI6HCAC



**Pilar Universal**



5070IDA	Ø3.3 x 4mm - H0.8mm	5070IFA	Ø3.3 x 6mm - H0.8mm	50702DA	Ø4.5 x 4mm - H0.8mm	50702FA	Ø4.5 x 6mm - H0.8mm
5070IDB	Ø3.3 x 4mm - H1.5mm	5070IFB	Ø3.3 x 6mm - H1.5mm	50702DB	Ø4.5 x 4mm - H1.5mm	50702FB	Ø4.5 x 6mm - H1.5mm
5070IDC	Ø3.3 x 4mm - H2.5mm	5070IFC	Ø3.3 x 6mm - H2.5mm	50702DC	Ø4.5 x 4mm - H2.5mm	50702FC	Ø4.5 x 6mm - H2.5mm
5070IDD	Ø3.3 x 4mm - H3.5mm	5070IFD	Ø3.3 x 6mm - H3.5mm	50702DD	Ø4.5 x 4mm - H3.5mm	50702FD	Ø4.5 x 6mm - H3.5mm
5070IDE	Ø3.3 x 4mm - H4.5mm	5070IFE	Ø3.3 x 6mm - H4.5mm	50702DE	Ø4.5 x 4mm - H4.5mm	50702FE	Ø4.5 x 6mm - H4.5mm
5070IDF	Ø3.3 x 4mm - H5.5mm	5070IFF	Ø3.3 x 6mm - H5.5mm	50702DF	Ø4.5 x 4mm - H5.5mm	50702FF	Ø4.5 x 6mm - H5.5mm

Análogo

100319



Ø3.0mm



Rosca M1.4



**Transfer  
mold. Aberta**

200319A



**Transfer  
mold. Fechada**

200319B



**Cicatrizador  
Tampa**

301319



Ø3.2

300318B	H2mm
300318C	H3mm
300318D	H4mm
300318E	H5mm
300318F	H6mm

**Cicatrizador**



Ø3.8

300319B	H2mm
300319C	H3mm
300319D	H4mm
300319E	H5mm
300319F	H6mm

**Cicatrizador**



**Ucla  
Base Metálica**

-  700319C
-  700319S



**Parafuso  
de Fixação**

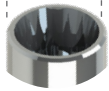
 M14UEB



Análogo  
100320



Ø3.5mm



Rosca M1.6



Transfer  
mold. Aberta

200320A



Transfer  
mold. Fechada

200320B



Cicatrizador  
Tampa

301320



Ø3.6

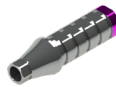
300320B	H2mm
300320C	H3mm
300320D	H4mm
300320E	H5mm
300320F	H6mm

Cicatrizador

Ø5.0

300323B	H2mm
300323C	H3mm
300323D	H4mm
300323E	H5mm
300323F	H6mm

Cicatrizador



Pilar  
Provisório

40320CA	40320SA	H0.8mm
40320CB	40320SB	H1.5 mm
40320CC	40320SC	H2.5mm
40320CD	40320SD	H3.5mm



Pilar  
Definitivo

500320A	H0.8mm
500320B	H1.5mm
500320C	H2.5mm
500320D	H3.5mm

Pilar Definitivo – Âng. 15°

50320AG	H1.5mm
50320BG	H2.5mm
50320CG	H3.5mm



Pilar Definitivo – Âng. 25°

50320AH	H1.5mm
50320BH	H2.5mm
50320CH	H3.5mm



Ucla Base  
Metálica

- 700320C
- 700320S



Mini Pilar  
Cônico



800320A	H0.8mm
800320B	H1.5mm
800320C	H2.5mm
800320D	H3.5mm
800320E	H4.5mm
800320F	H5.5mm



Mini Pilar – Âng. 17°

80320CG	H2.5mm
80320DG	H3.5mm



Mini Pilar – Âng. 30°

80320DH	H3.5mm
80320EH	H4.5mm



Parafuso  
de Fixação

- M16HEB
- ⊗ M16UEB



Análogo

100321



Ø4.3mm



Rosca M2.0



Transfer  
mold. Aberta

200321A



Transfer  
mold. Fechada

200321B



Cicatrizador  
Tampa

301321



Cicatrizador



Ø3.6

300321B	H2mm
300321C	H3mm
300321D	H4mm
300321E	H5mm
300321F	H6mm



Cicatrizador

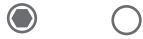


Ø5.0

300322B	H2mm
300322C	H3mm
300322D	H4mm
300322E	H5mm
300322F	H6mm



Pilar  
Provisório



40321CA	40321SA	H0.8mm
40321CB	40321SB	H1.5 mm
40321CC	40321SC	H2.5mm
40321CD	40321SD	H3.5mm



Pilar  
Definitivo

500321A	H0.8mm
500321B	H1.5mm
500321C	H2.5mm
500321D	H3.5mm



Pilar Definitivo - Âng. 15°

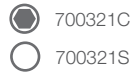
50321AG	H1.5mm
50321BG	H2.5mm
50321CG	H3.5mm

Pilar Definitivo - Âng. 25°

50321AH	H1.5mm
50321BH	H2.5mm
50321CH	H3.5mm



Ucla Base  
Metálica



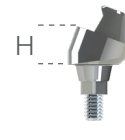
700321C  
700321S



Mini Pilar  
Cônico



800321A	H0.8mm
800321B	H1.5mm
800321C	H2.5mm
800321D	H3.5mm
800321E	H4.5mm
800321F	H5.5mm



Mini Pilar - Âng. 17°

80321CG	H2.5mm
80321DG	H3.5mm



Mini Pilar - Âng. 30°

80321DH	H3.5mm
80321EH	H4.5mm



Parafuso  
de Fixação

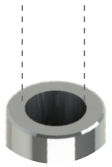
- M20HEB
- ⊕ M20UEB



Análogo  
100703



Ø2.0mm



- Rosca M1.8
- Ângulação Interna de 11.5°



Transfer  
mold. Aberta  
200703A



Transfer  
mold. Fechada  
200703B



Cicatrizador  
Tampa  
301703



Cicatrizador



Ø3.3		Ø4.5	
300703A	H0.8mm	300704A	H0.8mm
300703B	H1.5mm	300704B	H1.5mm
300703C	H2.5mm	300704C	H2.5mm
300703D	H3.5mm	300704D	H3.5mm
300703E	H4.5mm	300704E	H4.5mm
300703F	H5.5mm	300704F	H5.5mm



Pilar  
Provisório



40703CA	40703SA	H0.8mm
40703CB	40703SB	H1.5mm
40703CC	40703SC	H2.5mm



Ucla Base  
Metálica



70703CA	70703SA	H0.8mm
70703CB	70703SB	H1.5mm
70703CC	70703SC	H2.5mm



Mini pilar  
Cônico



800703A	H0.8mm	800703D	H3.5mm
800703B	H1.5mm	800703E	H4.5mm
800703C	H2.5mm	800703F	H5.5mm



Mini Pilar - Âng. 17°



Mini Pilar - Âng. 30°

80703BG	H1.5mm	80703BH	H1.5mm
80703CG	H2.5mm	80703CH	H2.5mm
80703DG	H3.5mm	80703DH	H3.5mm



Pilar  
O'Ring



900703A	H0.8mm
900703B	H1.5mm
900703C	H2.5mm
900703D	H3.5mm
900703E	H4.5mm
900703F	H5.5mm



Pilar GT



801007A	H0.8mm	801007D	H3.5mm
801007B	H1.5mm	801007E	H4.5mm
801007C	H2.5mm	801007F	H5.5mm



Parafuso  
de Fixação  
M18HND



Pilar  
Universal



50708DA	Ø3.3 x 4mm - H0.8mm	50709DA	Ø4.5 x 4mm - H0.8mm	50708FA	Ø3.3 x 6mm - H0.8mm	50709FA	Ø4.5 x 6mm - H0.8mm
50708DB	Ø3.3 x 4mm - H1.5mm	50709DB	Ø4.5 x 4mm - H1.5mm	50708FB	Ø3.3 x 6mm - H1.5mm	50709FB	Ø4.5 x 6mm - H1.5mm
50708DC	Ø3.3 x 4mm - H2.5mm	50709DC	Ø4.5 x 4mm - H2.5mm	50708FC	Ø3.3 x 6mm - H2.5mm	50709FC	Ø4.5 x 6mm - H2.5mm
50708DD	Ø3.3 x 4mm - H3.5mm	50709DD	Ø4.5 x 4mm - H3.5mm	50708FD	Ø3.3 x 6mm - H3.5mm	50709FD	Ø4.5 x 6mm - H3.5mm
50708DE	Ø3.3 x 4mm - H4.5mm	50709DE	Ø4.5 x 4mm - H4.5mm	50708FE	Ø3.3 x 6mm - H4.5mm	50709FE	Ø4.5 x 6mm - H4.5mm
50708DF	Ø3.3 x 4mm - H5.5mm	50709DF	Ø4.5 x 4mm - H5.5mm	50708FF	Ø3.3 x 6mm - H5.5mm	50709FF	Ø4.5 x 6mm - H5.5mm

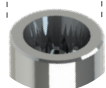


Análogo

100701



Ø3.5 / 4.0mm



Rosca M1.6



Transfer  
mold. Aberta

200701A



Transfer  
mold. Fechada

200701B



Cicatrizador



300701B H2mm

300701C H3mm

300701D H4mm

300701E H5mm

300701F H6mm



Pilar  
Provisório

● 400701C

○ 400701S



Pilar Definitivo

500701A H1mm

500701B H2mm

500701C H3mm

500701D H4mm



Ucla  
Base Metálica

● 700701C

○ 700701S



Mini pilar  
Cônico



800701A H1mm

800701B H2mm

800701C H3mm

800701D H4mm

800701E H5mm

800701F H6mm



Parafuso  
de Fixação

○ MI6HAT



Pilar definitivo – Âng. 15°

50701AG H1mm

50701BG H2mm

50701CG H3mm

Pilar definitivo – Âng. 25°

50701AH H1mm

50701BH H2mm

50701CH H3mm

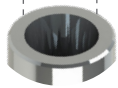


**Análogo**

100712



Ø2.72mm



Rosca M1.6  
Ângulação Interna de 16°



**Transfer  
mold. Aberta**

200712A



**Transfer  
mold. Fechada**

200712B



**Cicatrizador**



Ø3.5

300712B	H2mm
300712C	H3mm
300712D	H4mm
300712E	H5mm
300712F	H6mm

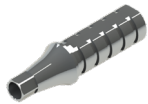


**Cicatrizador**



Ø4.5

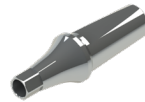
300713B	H2mm
300713C	H3mm
300713D	H4mm
300713E	H5mm
300713F	H6mm



**Pilar  
Provisório**



400712C	400712S	H1mm
40712CB	40712SB	H2mm
40712CC	40712SC	H3mm
40712CD	40712SD	H4mm



**Pilar  
Definitivo**

500712A	H1mm
500712B	H2mm
500712C	H3mm
500712D	H4mm
500712E	H5mm
500712F	H6mm

**Pilar Definitivo - Âng. 15°**



50712AG	H1mm
50712BG	H2mm
50712CG	H3mm

**Pilar Definitivo - Âng. 25°**

50712AH	H1mm
50712BH	H2mm
50712CH	H3mm



**Ucla Base  
Metálica**



700712C	700712S	H1mm
70712CB	70712SB	H2mm
70712CC	70712SC	H3mm



**Mini Pilar  
Cônico**

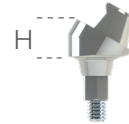


800712A	H1mm
800712B	H2mm
800712C	H3mm
800712D	H4mm
800712E	H5mm
800712F	H6mm



**Mini Pilar - Âng. 17°**

80712BG	H2mm
80712CG	H3mm
80712DG	H4mm



**Mini Pilar - Âng. 30°**

80712BH	H2mm
80712CH	H3mm
80712DH	H4mm



**Pilar  
O'Ring**



900712A	H1mm
900712B	H2mm
900712C	H3mm
900712D	H4mm
900712E	H5mm
900712F	H6mm



**Parafuso  
de Fixação**

○ M16HSI



Com travamento



Sem travamento

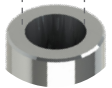


Hexagonal

Análogo  
100703



Ø2.0mm



- Rosca M1.8
- Ângulação Interna de 11.5°



Transfer  
mold. Aberta  
200703A



Transfer  
mold. Fechada  
200703B



Cicatrizador  
Tampa  
301703



Cicatrizador



Ø3.3		Ø4.5	
300703A	H0.8mm	300704A	H0.8mm
300703B	H1.5mm	300704B	H1.5mm
300703C	H2.5mm	300704C	H2.5mm
300703D	H3.5mm	300704D	H3.5mm
300703E	H4.5mm	300704E	H4.5mm
300703F	H5.5mm	300704F	H5.5mm



Pilar  
Provisório



40703CA	40703SA	H0.8mm
40703CB	40703SB	H1.5mm
40703CC	40703SC	H2.5mm



Ucla Base  
Metálica



70703CA	70703SA	H0.8mm
70703CB	70703SB	H1.5mm
70703CC	70703SC	H2.5mm



Mini pilar  
Cônico



800703A	H0.8mm	800703D	H3.5mm
800703B	H1.5mm	800703E	H4.5mm
800703C	H2.5mm	800703F	H5.5mm



Mini Pilar - Âng. 17°



Mini Pilar - Âng. 30°

80703BG	H1.5mm	80703BH	H1.5mm
80703CG	H2.5mm	80703CH	H2.5mm
80703DG	H3.5mm	80703DH	H3.5mm



Pilar  
O'Ring



900703A	H0.8mm
900703B	H1.5mm
900703C	H2.5mm
900703D	H3.5mm
900703E	H4.5mm
900703F	H5.5mm



Pilar GT



801007A	H0.8mm	801007D	H3.5mm
801007B	H1.5mm	801007E	H4.5mm
801007C	H2.5mm	801007F	H5.5mm



Parafuso  
de Fixação  
M18HND



Pilar  
Universal



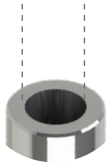
50708DA	Ø3.3 x 4mm - H0.8mm	50709DA	Ø4.5 x 4mm - H0.8mm	50708FA	Ø3.3 x 6mm - H0.8mm	50709FA	Ø4.5 x 6mm - H0.8mm
50708DB	Ø3.3 x 4mm - H1.5mm	50709DB	Ø4.5 x 4mm - H1.5mm	50708FB	Ø3.3 x 6mm - H1.5mm	50709FB	Ø4.5 x 6mm - H1.5mm
50708DC	Ø3.3 x 4mm - H2.5mm	50709DC	Ø4.5 x 4mm - H2.5mm	50708FC	Ø3.3 x 6mm - H2.5mm	50709FC	Ø4.5 x 6mm - H2.5mm
50708DD	Ø3.3 x 4mm - H3.5mm	50709DD	Ø4.5 x 4mm - H3.5mm	50708FD	Ø3.3 x 6mm - H3.5mm	50709FD	Ø4.5 x 6mm - H3.5mm
50708DE	Ø3.3 x 4mm - H4.5mm	50709DE	Ø4.5 x 4mm - H4.5mm	50708FE	Ø3.3 x 6mm - H4.5mm	50709FE	Ø4.5 x 6mm - H4.5mm
50708DF	Ø3.3 x 4mm - H5.5mm	50709DF	Ø4.5 x 4mm - H5.5mm	50708FF	Ø3.3 x 6mm - H5.5mm	50709FF	Ø4.5 x 6mm - H5.5mm



Análogo  
100703



Ø2.0mm



- Rosca M1.8
- Ângulação Interna de 11.5°



Transfer  
mold. Aberta  
200703A



Transfer  
mold. Fechada  
200703B



Cicatrizador  
Tampa  
301703



Cicatrizador



Ø3.3		Ø4.5	
300703A	H0.8mm	300704A	H0.8mm
300703B	H1.5mm	300704B	H1.5mm
300703C	H2.5mm	300704C	H2.5mm
300703D	H3.5mm	300704D	H3.5mm
300703E	H4.5mm	300704E	H4.5mm
300703F	H5.5mm	300704F	H5.5mm



Pilar  
Provisório



40703CA	40703SA	H0.8mm
40703CB	40703SB	H1.5mm
40703CC	40703SC	H2.5mm



Ucla Base  
Metálica



70703CA	70703SA	H0.8mm
70703CB	70703SB	H1.5mm
70703CC	70703SC	H2.5mm



Mini pilar  
Cônico



800703A	H0.8mm	800703D	H3.5mm
800703B	H1.5mm	800703E	H4.5mm
800703C	H2.5mm	800703F	H5.5mm

Componentes para Mini Pilar - Pág 36



Mini Pilar - Âng. 17°



Mini Pilar - Âng. 30°

80703BG	H1.5mm	80703BH	H1.5mm
80703CG	H2.5mm	80703CH	H2.5mm
80703DG	H3.5mm	80703DH	H3.5mm



Pilar  
O'Ring



900703A	H0.8mm
900703B	H1.5mm
900703C	H2.5mm
900703D	H3.5mm
900703E	H4.5mm
900703F	H5.5mm



Pilar GT



801007A	H0.8mm	801007D	H3.5mm
801007B	H1.5mm	801007E	H4.5mm
801007C	H2.5mm	801007F	H5.5mm

Componentes para Pilar GT - Pág 37



Parafuso  
de Fixação  
M18HND



Pilar  
Universal

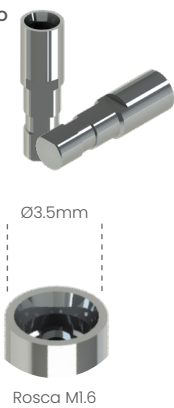


50708DA	Ø3.3 x 4mm - H0.8mm	50709DA	Ø4.5 x 4mm - H0.8mm	50708FA	Ø3.3 x 6mm - H0.8mm	50709FA	Ø4.5 x 6mm - H0.8mm
50708DB	Ø3.3 x 4mm - H1.5mm	50709DB	Ø4.5 x 4mm - H1.5mm	50708FB	Ø3.3 x 6mm - H1.5mm	50709FB	Ø4.5 x 6mm - H1.5mm
50708DC	Ø3.3 x 4mm - H2.5mm	50709DC	Ø4.5 x 4mm - H2.5mm	50708FC	Ø3.3 x 6mm - H2.5mm	50709FC	Ø4.5 x 6mm - H2.5mm
50708DD	Ø3.3 x 4mm - H3.5mm	50709DD	Ø4.5 x 4mm - H3.5mm	50708FD	Ø3.3 x 6mm - H3.5mm	50709FD	Ø4.5 x 6mm - H3.5mm
50708DE	Ø3.3 x 4mm - H4.5mm	50709DE	Ø4.5 x 4mm - H4.5mm	50708FE	Ø3.3 x 6mm - H4.5mm	50709FE	Ø4.5 x 6mm - H4.5mm
50708DF	Ø3.3 x 4mm - H5.5mm	50709DF	Ø4.5 x 4mm - H5.5mm	50708FF	Ø3.3 x 6mm - H5.5mm	50709FF	Ø4.5 x 6mm - H5.5mm

Componentes para Pilar Universal - Pág 37



Análogo 100750



Transfer mold. Aberta  
200750A



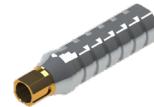
Transfer mold. Fechada  
200750B



Cicatrizador



300750B	H2mm
300750C	H3.5mm
300750E	H5mm
300750F	H6mm



Pilar Provisório

400750C 400750S



Ucla Base Metálica

700750C  
700750S



Mini Pilar Cônico



800750A	H1mm
800750B	H2mm
800750C	H3mm
800750D	H4mm
800750E	H5mm
800750F	H6mm



Mini Pilar - Âng. 17°

80750BG	H2mm
80750CG	H3mm
80750DG	H4mm



Mini Pilar - Âng. 30°

80750CH	H3mm
80750DH	H4mm



Pilar O'Ring



900750B	H2mm
900750C	H3.5mm
900750E	H5mm
900750F	H6mm



Cicatrizador Tampa



301750



Parafuso de Fixação



M16TNC

Prótese cimentada

Análogo CI



10750DD	Ø3.5 x 4mm
10750DF	Ø3.5 x 5.5mm
10750ED	Ø5 x 4mm
10750EF	Ø5 x 5.5mm

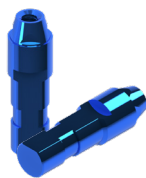


Pilar Definitivo CI

5750DDA	Ø3.5 x 4mm - H1mm	5750EDA	Ø5 x 4mm - H1mm
5750DDB	Ø3.5 x 4mm - H2mm	5750EDB	Ø5 x 4mm - H2mm
5750DDC	Ø3.5 x 4mm - H3mm	5750EDC	Ø5 x 4mm - H3mm
5750DDFA	Ø3.5 x 5.5mm - H1mm	5750EFA	Ø5 x 5.5mm - H1mm
5750DFB	Ø3.5 x 5.5mm - H2mm	5750EFB	Ø5 x 5.5mm - H2mm
5750DFC	Ø3.5 x 5.5mm - H3mm	5750EFC	Ø5 x 5.5mm - H3mm

Prótese Parafusada - SRA

Análogo AP (SRA)



100751	Ø3.5
100752	Ø4.6



Transfer mold. Aberta (SRA)



Transfer mold. Fechada (SRA)

200751A	Ø3.5 - Mold. Aberta
200751B	Ø3.5 - Mold. Fechada
200752A	Ø4.6 - Mold. Aberta
200752B	Ø4.6 - Mold. Fechada



Cicatrizador Tampa

301751



Cicatrizador



300751B	H2mm
300751C	H3.5mm
300751E	H5mm
300751F	H6mm



Pilar Provisório AP (SRA)

400751C	Ø3.5
400751S	Ø3.5
400752C	Ø4.6
400752S	Ø4.6



Ucla Plástica AP (SRA)

600751C	Ø3.5
600751S	Ø3.5
600752C	Ø4.6
600752S	Ø4.6



Mini Pilar AP (SRA)

800751A	Ø3.5 X H1mm	800752A	Ø4.6 X H1mm
800751B	Ø3.5 X H2.5mm	800752B	Ø4.6 X H2.5mm
800751C	Ø3.5 X H4mm	800752C	Ø4.6 X H4mm

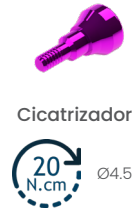
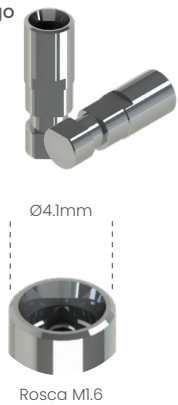


Parafuso de Fixação

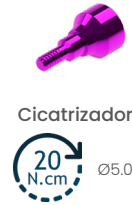
M14UMU



Análogo  
100755



300755B	H2mm
300755C	H3mm
300755D	H4mm
300755E	H5mm
300755F	H6mm



300756B	H2mm
300756C	H3mm
300756D	H4mm
300756E	H5mm
300756F	H6mm



800755A	H1mm
800755B	H2mm
800755C	H3mm
800755D	H4mm
800755E	H5mm
800755F	H6mm



80755BG	H2mm
80755CG	H3mm
80755DG	H4mm
80755CH	H3mm
80755DH	H4mm

Pilar  
O'Ring



Prótese cimentada

Análogo  
CI



10750ED	Ø5 x 4mm
10750EF	Ø5 x 5.5mm



5755EDA	Ø5 x 4mm - H1mm
5755EDB	Ø5 x 4mm - H2mm
5755EDC	Ø5 x 4mm - H3mm
5755EFA	Ø5 x 5.5mm - H1mm
5755EFB	Ø5 x 5.5mm - H2mm
5755EFC	Ø5 x 5.5mm - H3mm

Prótese Parafusada - SRA

Análogo  
AP (SRA)



100752 Ø4.6



20 N.cm

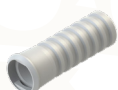


200752A	Ø4.6 - Mold. Aberta
200752B	Ø4.6 - Mold. Fechada



● 400752C  
○ 400752S

Ucla Plástica AP (SRA)



● 600752C  
○ 600752S



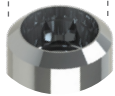
800756A	Ø4.6 X H1mm
800756B	Ø4.6 X H2.5mm
800756C	Ø4.6 X H4mm



Análogo  
100



Ø4.8mm



Rosca M2.0



Transfer  
mold. Aberta

200730A



Transfer  
mold. Fechada

200730B

Cicatrizador Tampa



301730



Cicatrizador



300730B	H2mm
300730C	H3mm
300730D	H4.5mm
300730F	H6mm



Ucla  
Base Metálica

● 700730C

○ 700730S



Pilar  
Provisório

● 400730C

○ 400730S



Mini Pilar  
Cônico



800730A	H1mm
800730B	H2mm
800730C	H3mm
800730D	H4mm



Mini Pilar - Âng. 17°

80730BG	H1.5mm
80730CG	H2.5mm
80730DG	H3.5mm



Mini Pilar - Âng. 30°

80730CH	H2.5mm
80730DH	H3.5mm



Pilar  
O'Ring



900730B	H2mm
900730C	H3mm
900730D	H4.5mm
900730F	H6mm

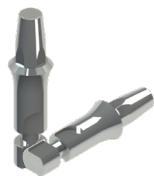
Parafuso de Fixação



M20TRN

Prótese cimentada

Análogo  
CI  
100730CI



Mini Pilar  
CI

Pilar SynOcta®  
Cimentável



80730CI

Coping  
Plástico CI



● 60730CCI

○ 60730SCI



Análogo Pilar Sólido

100780A	H4mm
100780B	H5.5mm
100780C	H7mm



Pilar Sólido

500780A	H4mm
500780B	H5.5mm
500780C	H7mm

Prótese Parafusada - SRA

Análogo  
SO  
100730AP



Mini Pilar SO  
Pilar SynOcta®

80730AP



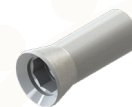
Transfer  
mold. Aberta

200731A



Transfer  
mold. Fechada

200731B



Coping  
Plástica SO

● 60730CAP

○ 60730SAP



Cicatrizador  
Tampa

301731



Pilar  
Provisório SO

● 400731C

○ 400731S



Ucla Base  
Metálica SO

● 700731C

○ 700731S



Parafuso  
de Fixação

M20TST



Análogo  
100736



Cicatrizador  
Tampa



300736B	H2mm
300736C	H3mm
300736D	H4.5mm
300736F	H6mm



Ucla  
Base Metálica

- 700736C
- 700736S



Pilar  
Provisório

- 400736C
- 400736S



Pilar O'Ring

900736B	H2mm
900736C	H3mm
900736D	H4.5mm
900736F	H6mm



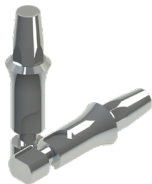
Parafuso  
de Fixação

M20TRN



Prótese cimentada

Análogo  
CI  
100736CI



Mini Pilar CI

Pilar SynOcta®  
Cimentável



Coping  
Plástico CI

- 60736CCI
- 60736SCI

Análogo  
do Pilar  
Sólido



100781A	H4mm
100781B	H5.5mm



Pilar Sólido

500781A	H4mm
500781B	H5.5mm

Prótese Parafusada - SRA

Análogo  
SO  
100736AP



Mini Pilar SO  
Pilar SynOcta®  
80736AP



Transfer  
mold. Aberta  
200737A



Transfer  
mold. Fechada  
200737B

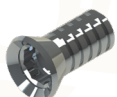


Coping  
Plástica SO

- 60736CAP
- 60736SAP



Cicatrizador  
Tampa  
301737



Pilar  
Provisório SO  
● 400737C  
○ 400737S



Ucla Base  
Metálica SO  
● 700737C  
○ 700737S



Parafuso  
de Fixação  
M20TST



Análogo  
100790



Ø3.5 / 4.5mm



Rosca M1.6



Transfer  
mold. Aberta  
200790A



Transfer  
mold. Fechada  
200790B



Ucla  
Base Metálica

- 700756C
- 700756S



Mini Pilar Cônico



800790A	H1.5mm
800790B	H2.5mm
800790C	H3.5mm
800790D	H4.5mm
800790E	H5.5mm
800790F	H6.5mm



Parafuso  
de Fixação  
● M16HCOC



Cicatrizador



30790BB	Ø3.8 x 2mm - H1.5mm	30791BB	Ø4.5 x 2mm - H1.5mm
30790BC	Ø3.8 x 2mm - H2.5mm	30791BC	Ø4.5 x 2mm - H2.5mm
30790BD	Ø3.8 x 2mm - H3.5mm	30791BD	Ø4.5 x 2mm - H3.5mm
30790DB	Ø3.8 x 4mm - H1.5mm	30791DB	Ø4.5 x 4mm - H1.5mm
30790DC	Ø3.8 x 4mm - H2.5mm	30791DC	Ø4.5 x 4mm - H2.5mm
30790DD	Ø3.8 x 4mm - H3.5mm	30791DD	Ø4.5 x 4mm - H3.5mm

Prótese Parafusada - SRA



Pilar  
Definitivo  
500790B H2.5mm



Mini pilar  
Cônico



800791A	H1,5mm
800791B	H2.5mm
800791C	H3.5mm
800791D	H4.5mm

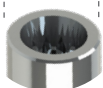


Análogo

100701



∅2.1mm



Rosca M1.6



Transfer  
mold. Aberta

200701A



Transfer  
mold. Fechada

200701B



Cicatrizador



300701B H2mm

300701C H3mm

300701D H4mm

300701E H5mm

300701F H6mm



Pilar  
Provisório

● 400701C

○ 400701S



Pilar Definitivo

500701A H1mm

500701B H2mm

500701C H3mm

500701D H4mm



Ucla

Base Metálica

● 700701C

○ 700701S



Mini pilar  
Cônico



800701A H1mm

800701B H2mm

800701C H3mm

800701D H4mm

800701E H5mm

800701F H6mm



Parafuso  
de Fixação

○ M16HAT



Pilar definitivo - Âng. 15°

50701AG H1mm

50701BG H2mm

50701CG H3mm

Pilar definitivo - Âng. 25°

50701AH H1mm

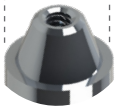
50701BH H2mm

50701CH H3mm

Análogo  
101005



Ø4.8mm



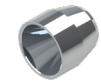
Rosca M1.4



Transfer  
mold. Aberta  
201005A



Transfer  
mold. Fechada  
201005B



Tampa  
de Proteção  
301005



Pilar  
Provisório  
401005



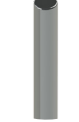
Pilar  
P/ Solda  
401005E (Solda)

Ø3.18mm



Barra de Titânio  
3.18mm  
T03180136

Ø0.8mm



Fio de Titânio  
0.80mm  
T00800136



Coping  
Plástico  
601005



Parafuso  
de Fixação  
M14MU

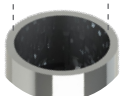


Ucla Base  
Metálica  
701005

Análogo  
100801



Ø3.15mm



Rosca M1.8



Transfer  
mold. Aberta  
200801A



Transfer  
mold. Fechada  
200801B



Cicatrizador



Cicatrizador



Ø3.9

300801B	H2mm
300801C	H3mm
300801D	H4mm
300801E	H5mm
300801F	H6mm

Ø4.8

300802B	H2mm
300802C	H3mm
300802D	H4mm
300802E	H5mm
300802F	H6mm



Ucla Base  
Metálica



70801CA	70801SA	H1mm
70801CB	70801SB	H2mm
70801CC	70801SC	H3mm



Pilar  
Provisório

400801C  
400801S



Pilar  
Definitivo

500801A	H1mm
500801B	H2mm
500801C	H3mm
500801D	H4mm



Mini Pilar  
Cônico



800801A	H1mm
800801B	H2mm
800801C	H3mm
800801D	H4mm
800801E	H5mm
800801F	H6mm



Parafuso  
de Fixação  
M18HMI



Mini Pilar - Âng. 17°

80801BG	H2mm
80801CG	H3mm
80801DG	H4mm

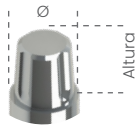


Mini Pilar - Âng. 30°

80801CH	H3mm
80801DH	H4mm

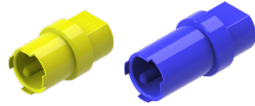
# Utilização Universal

## Análogo do Pilar Universal



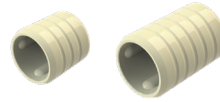
Ø x Alt.

100708D	Ø3.3 x 4mm
100708F	Ø3.3 x 6mm
100709D	Ø4.5 x 4mm
100709F	Ø4.5 x 6mm



Poste Transfer do  
Pilar Universal

200708D	Ø3.3 x 4mm
200708F	Ø3.3 x 6mm
200709D	Ø4.5 x 4mm
200709F	Ø4.5 x 6mm



Poste Provisório do  
Pilar Universal

400708D	Ø3.3 x 4mm
400708F	Ø3.3 x 6mm
400709D	Ø4.5 x 4mm
400709F	Ø4.5 x 6mm



Coping Plástico do  
Pilar Universal

600708D	Ø3.3 x 4mm
600708F	Ø3.3 x 6mm
600709D	Ø4.5 x 4mm
600709F	Ø4.5 x 6mm

# Utilização GT

Análogo  
101007



Ø4.8mm



Rosca M2.0



Transfer  
mold. Aberta  
201007A



Transfer  
mold. Fechada  
201007B



Pilar  
Provisório

- 401007C
- 401007S



Ucla Plástica

- 601007C
- 601007S



Ucla Base  
Metálica

- 701007C
- 701007S



Cicatrizador  
Tampa  
301007



Pilar GT



801007A	H0.8mm
801007B	H1.5mm
801007C	H2.5mm
801007D	H3.5mm
801007E	H4.5mm
801007F	H5.5mm



Parafuso  
de Fixação

- M20BT1



Legenda



Com travamento



Sem travamento



Hexagonal

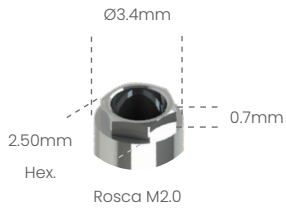


# Sistema Conexão Externa

- 
- 
- 
- 
-

Análogo

100104



Transfer mold.  
Aberta

200104A



Transfer mold.  
Fechada

200104B



Cicatrizador



300104B	H2mm
300104C	H3mm
300104D	H4mm
300104E	H5mm
300104F	H6mm



Pilar  
Provisório

- 400104C
- 400104S



Ucla  
Plástica

- 600104C
- 600104S



Ucla  
Base Metálica

- 700104C
- 700104S



Mini pilar  
Cônico



800104A	H1mm
800104B	H2mm
800104C	H3mm
800104D	H4mm
800104E	H5mm
800104F	H6mm



Mini Pilar - Âng. 17°



80104BG	H2mm
80104CG	H3mm
80104DG	H4mm



Mini Pilar - Âng. 30°

80104CH	H3mm
80104DH	H4mm



Parafuso  
de Fixação

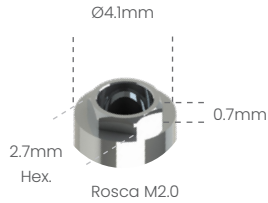
- M20HX
- M20QU



Possibilita a técnica de Plataforma Switching com o Sistema HE 5.0 3i®

**Análogo**

100105



**Transfer mold. Aberta**

200105A



**Transfer mold. Fechada**

200105B



**Cicatrizador Tampa**

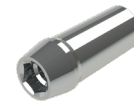
301105



**Cicatrizador**

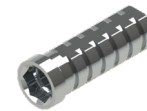


300105B	H2mm
300105C	H3mm
300105D	H4mm
300105E	H5mm
300105F	H6mm



**Pilar Definitivo**

500105A	H1mm
500105B	H2mm
500105C	H3mm
500105D	H4mm



**Pilar Provisório**

- 400105C
- 400105S



**Ucla Plástica**

- 600105C
- 600105S



**Ucla Base Metálica**

- 700105C
- 700105S



**Mini pilar Cônico**



800105A	H1mm
800105B	H2mm
800105C	H3mm
800105D	H4mm
800105E	H5mm
800105F	H6mm



**Pilar Definitivo Ang. 15°**

50105AG	H1mm
50105BG	H2mm
50105CG	H3mm



**Pilar Definitivo Ang. 25°**

50105AH	H1mm
50105BH	H2mm
50105CH	H3mm



**Mini Pilar - Âng. 17°**

80105BG	H2mm
80105CG	H3mm
80105DG	H4mm



**Mini Pilar - Âng. 30°**

80105CH	H3mm
80105DH	H4mm



**Pilar O'ring**



900105A	H1mm
900105B	H2mm
900105C	H3mm
900105D	H4mm
900105E	H5mm
900105F	H6mm



**Mini pilar Esteticone**



801004A	H1mm
801004B	H2mm
801004C	H3mm
801004D	H4mm
801004E	H5mm
801004F	H6mm

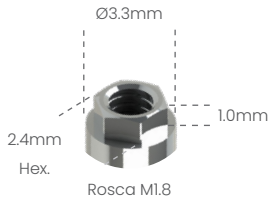


**Parafuso de Fixação**

- M20HX
- M20QU



Análogo  
100102



300102B	H2mm
300102C	H3mm
300102D	H4mm
300102E	H5mm
300102F	H6mm



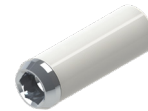
Pilar Provisório

400102C
400102S



Ucla Plástica

600102C
600102S



Ucla Base Metálica

700102C
700102S



800102A	H1mm
800102B	H2mm
800102C	H3mm
800102D	H4mm
800102E	H5mm
800102F	H6mm



Mini Pilar - Âng. 17°

80102BG	H2mm
80102CG	H3mm
80102DG	H4mm

Mini Pilar - Âng. 30°

80102CH	H3mm
80102DH	H4mm



900102A	H1mm
900102B	H2mm
900102C	H3mm
900102D	H4mm
900102E	H5mm
900102F	H6mm

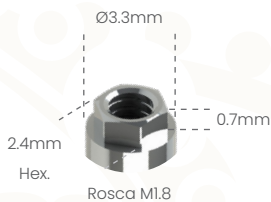


Parafuso de Fixação

M18HX
M18QU



Análogo  
100102



300102B	H2mm
300102C	H3mm
300102D	H4mm
300102E	H5mm
300102F	H6mm



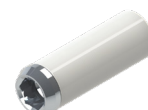
Pilar Provisório

400102C
400102S



Ucla Plástica

600102C
600102S



Ucla Base Metálica

700102C
700102S



800102A	H1mm
800102B	H2mm
800102C	H3mm
800102D	H4mm
800102E	H5mm
800102F	H6mm

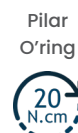


Mini Pilar - Âng. 17°

80102BG	H2mm
80102CG	H3mm
80102DG	H4mm

Mini Pilar - Âng. 30°

80102CH	H3mm
80102DH	H4mm



900102A	H1mm
900102B	H2mm
900102C	H3mm
900102D	H4mm
900102E	H5mm
900102F	H6mm



Parafuso de Fixação

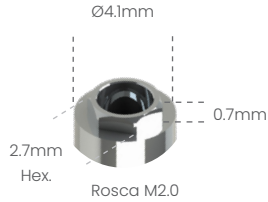
M18HX
M18QU



Possibilita a técnica de Plataforma Switching com o Sistema HE 5.0 3i®

**Análogo**

100105



**Transfer mold. Aberta**

200105A



**Transfer mold. Fechada**

200105B



**Cicatrizador Tampa**

301105



**Cicatrizador**

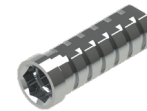


300105B	H2mm
300105C	H3mm
300105D	H4mm
300105E	H5mm
300105F	H6mm



**Pilar Definitivo**

500105A	H1mm
500105B	H2mm
500105C	H3mm
500105D	H4mm



**Pilar Provisório**

- 400105C
- 400105S



**Ucla Plástica**

- 600105C
- 600105S



**Ucla Base Metálica**

- 700105C
- 700105S



**Mini pilar Cônico**



800105A	H1mm
800105B	H2mm
800105C	H3mm
800105D	H4mm
800105E	H5mm
800105F	H6mm



**Pilar Definitivo Ang. 15°**

50105AG	H1mm
50105BG	H2mm
50105CG	H3mm



**Pilar Definitivo Ang. 25°**

50105AH	H1mm
50105BH	H2mm
50105CH	H3mm



**Mini Pilar - Âng. 17°**

80105BG	H2mm
80105CG	H3mm
80105DG	H4mm



**Mini Pilar - Âng. 30°**

80105CH	H3mm
80105DH	H4mm



**Pilar O'ring**



900105A	H1mm
900105B	H2mm
900105C	H3mm
900105D	H4mm
900105E	H5mm
900105F	H6mm



**Mini pilar Esteticone**



801004A	H1mm
801004B	H2mm
801004C	H3mm
801004D	H4mm
801004E	H5mm
801004F	H6mm



**Parafuso de Fixação**

- M20HX
- M20QU





Análogo

100110



Ø5.0mm

3.3mm  
Hex.

Rosca M2.5

1.0mm



Transfer mold.  
Aberta  
200110A



Transfer mold.  
Fechada  
200110B



Cicatrizador



300110B	H2mm
300110C	H3mm
300110D	H4mm
300110E	H5mm
300110F	H6mm



Pilar  
Provisório

- 400110C
- 400110S



Ucla  
Plástica

- 600110C
- 600110S



Ucla  
Base Metálica

- 700110C
- 700110S



Mini pilar  
Cônico



800110A	H1mm
800110B	H2mm
800110C	H3mm
800110D	H4mm
800110E	H5mm
800110F	H6mm



Mini Pilar - Âng. 17°



80110BG	H2mm
80110CG	H3mm
80110DG	H4mm



Mini Pilar - Âng. 30°

80110CH	H3mm
80110DH	H4mm



Parafuso  
de Fixação

- M25HX
- M25QU



Análogo

100102



Ø3.3mm

2.37mm  
Hex.

Rosca M1.8

0.7mm



Transfer mold.  
Aberta  
200102A



Transfer mold.  
Fechada  
200102B



Cicatrizador



300102B	H2mm
300102C	H3mm
300102D	H4mm
300102E	H5mm
300102F	H6mm



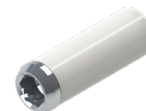
Pilar  
Provisório

- 400102C
- 400102S



Ucla  
Plástica

- 600102C
- 600102S



Ucla  
Base Metálica

- 700102C
- 700102S



Mini pilar  
Cônico



800102A	H1mm
800102B	H2mm
800102C	H3mm
800102D	H4mm
800102E	H5mm
800102F	H6mm



Mini Pilar - Âng. 17°



80102BG	H2mm
80102CG	H3mm
80102DG	H4mm



Mini Pilar - Âng. 30°

80102CH	H3mm
80102DH	H4mm



Pilar  
O'ring



900102A	H1mm
900102B	H2mm
900102C	H3mm
900102D	H4mm
900102E	H5mm
900102F	H6mm



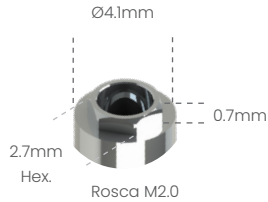
Parafuso  
de Fixação

- M18HX
- M18QU



Possibilita a técnica de Plataforma Switching com o Sistema HE 5.0 3i®

Análogo  
100105



Transfer mold.  
Aberta  
200105A



Transfer mold.  
Fechada  
200105B



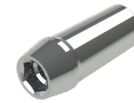
Cicatrizador  
Tampa  
301105



Cicatrizador

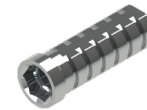


300105B	H2mm
300105C	H3mm
300105D	H4mm
300105E	H5mm
300105F	H6mm



Pilar  
Definitivo

500105A	H1mm
500105B	H2mm
500105C	H3mm
500105D	H4mm



Pilar  
Provisório

- 400105C
- 400105S



Ucla  
Plástica

- 600105C
- 600105S



Ucla  
Base Metálica

- 700105C
- 700105S



Mini pilar  
Cônico



800105A	H1mm
800105B	H2mm
800105C	H3mm
800105D	H4mm
800105E	H5mm
800105F	H6mm



Pilar Definitivo Ang. 15°

50105AG	H1mm
50105BG	H2mm
50105CG	H3mm



Pilar Definitivo Ang. 25°

50105AH	H1mm
50105BH	H2mm
50105CH	H3mm



Mini Pilar - Âng. 17°

80105BG	H2mm
80105CG	H3mm
80105DG	H4mm



Mini Pilar - Âng. 30°

80105CH	H3mm
80105DH	H4mm



Pilar O'ring



900105A	H1mm
900105B	H2mm
900105C	H3mm
900105D	H4mm
900105E	H5mm
900105F	H6mm



Mini pilar  
Esteticone



801004A	H1mm
801004B	H2mm
801004C	H3mm
801004D	H4mm
801004E	H5mm
801004F	H6mm

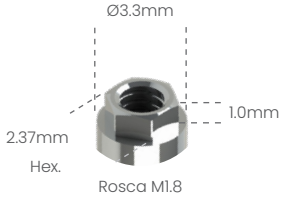


Parafuso  
de Fixação

- M20HX
- M20QU



Análogo  
100102



Transfer mold.  
Aberta  
200102A



Transfer mold.  
Fechada  
200102B



Cicatrizador



300102B	H2mm
300102C	H3mm
300102D	H4mm
300102E	H5mm
300102F	H6mm



Pilar  
Provisório

- 400102C
- 400102S



Ucla  
Plástica

- 600102C
- 600102S



Ucla  
Base Metálica

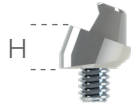
- 700102C
- 700102S



Mini pilar  
Cônico



800102A	H1mm
800102B	H2mm
800102C	H3mm
800102D	H4mm
800102E	H5mm
800102F	H6mm



Mini Pilar - Âng. 17°



80102BG	H2mm
80102CG	H3mm
80102DG	H4mm



Mini Pilar - Âng. 30°

80102CH	H3mm
80102DH	H4mm



Pilar  
O'ring



900102A	H1mm
900102B	H2mm
900102C	H3mm
900102D	H4mm
900102E	H5mm
900102F	H6mm

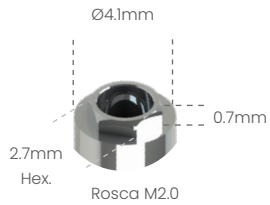


Parafuso  
de Fixação

- M18HX
- M18QU



Análogo  
100105



Transfer mold.  
Aberta  
200105A



Transfer mold.  
Fechada  
200105B



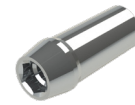
Cicatrizador  
Tampa  
301105



Cicatrizador

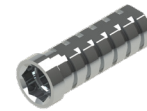


300105B	H2mm
300105C	H3mm
300105D	H4mm
300105E	H5mm
300105F	H6mm



Pilar  
Definitivo

500105A	H1mm
500105B	H2mm
500105C	H3mm
500105D	H4mm



Pilar  
Provisório

- 400105C
- 400105S



Ucla  
Plástica

- 600105C
- 600105S



Ucla  
Base Metálica

- 700105C
- 700105S



Mini pilar  
Cônico



800105A	H1mm
800105B	H2mm
800105C	H3mm
800105D	H4mm
800105E	H5mm
800105F	H6mm



Pilar Definitivo Ang. 15°

50105AG	H1mm
50105BG	H2mm
50105CG	H3mm



Pilar Definitivo Ang. 25°

50105AH	H1mm
50105BH	H2mm
50105CH	H3mm



Mini Pilar - Âng. 17°

80105BG	H2mm
80105CG	H3mm
80105DG	H4mm



Mini Pilar - Âng. 30°

80105CH	H3mm
80105DH	H4mm



Pilar O'ring



900105A	H1mm
900105B	H2mm
900105C	H3mm
900105D	H4mm
900105E	H5mm
900105F	H6mm



Mini pilar  
Esteticone



801004A	H1mm
801004B	H2mm
801004C	H3mm
801004D	H4mm
801004E	H5mm
801004F	H6mm



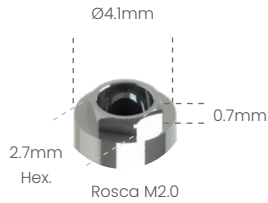
Parafuso  
de Fixação

- M20HX
- M20QU



\*Implante 3.25 apenas para Classic e Torq Int. Switch

**Análogo**  
100105



**Transfer mold. Aberta**  
200105A



**Transfer mold. Fechada**  
200105B



**Cicatrizador Tampa**  
301105



**Cicatrizador**

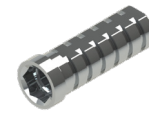


300105B	H2mm
300105C	H3mm
300105D	H4mm
300105E	H5mm
300105F	H6mm



**Pilar Definitivo**

500105A	H1mm
500105B	H2mm
500105C	H3mm
500105D	H4mm



**Pilar Provisório**

- 400105C
- 400105S



**Ucla Plástica**

- 600105C
- 600105S



**Ucla Base Metálica**

- 700105C
- 700105S



**Mini pilar Cônico**



800105A	H1mm
800105B	H2mm
800105C	H3mm
800105D	H4mm
800105E	H5mm
800105F	H6mm



**Pilar Definitivo Ang. 15°**

50105AG	H1mm
50105BG	H2mm
50105CG	H3mm



**Pilar Definitivo Ang. 25°**

50105AH	H1mm
50105BH	H2mm
50105CH	H3mm



**Mini Pilar - Âng. 17°**

80105BG	H2mm
80105CG	H3mm
80105DG	H4mm



**Mini Pilar - Âng. 30°**

80105CH	H3mm
80105DH	H4mm



**Pilar O'ring**



900105A	H1mm
900105B	H2mm
900105C	H3mm
900105D	H4mm
900105E	H5mm
900105F	H6mm



**Mini pilar Esteticone**



801004A	H1mm
801004B	H2mm
801004C	H3mm
801004D	H4mm
801004E	H5mm
801004F	H6mm



**Parafuso de Fixação**

- M20HX
- M20QU



Análogo  
100101



Transfer mold.  
Aberta  
200101A



Transfer mold.  
Fechada  
200101B



Cicatrizador



300101B	H2mm
300101C	H3mm
300101D	H4mm
300101E	H5mm
300101F	H6mm



Pilar  
Provisório

- 400101C
- 400101S



Ucla  
Plástica

- 600101C
- 600101S



Ucla  
Base Metálica

- 700101C
- 700101S



Mini pilar  
Cônico



800101A	H1mm
800101B	H2mm
800101C	H3mm
800101D	H4mm
800101E	H5mm
800101F	H6mm



Mini Pilar - Âng. 17°

80101BG	H2mm
80101CG	H3mm
80101DG	H4mm



Mini Pilar - Âng. 30°

80101CH	H3mm
80101DH	H4mm

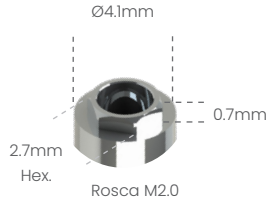


Parafuso  
de Fixação

- M16HX
- M16QU



Análogo  
100105



Transfer mold.  
Aberta  
200105A



Transfer mold.  
Fechada  
200105B



Cicatrizador  
Tampa  
301105



Cicatrizador

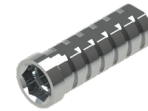


300105B	H2mm
300105C	H3mm
300105D	H4mm
300105E	H5mm
300105F	H6mm



Pilar  
Definitivo

500105A	H1mm
500105B	H2mm
500105C	H3mm
500105D	H4mm



Pilar  
Provisório

- 400105C
- 400105S



Ucla  
Plástica

- 600105C
- 600105S



Ucla  
Base Metálica

- 700105C
- 700105S



Mini pilar  
Cônico



800105A	H1mm
800105B	H2mm
800105C	H3mm
800105D	H4mm
800105E	H5mm
800105F	H6mm



Pilar Definitivo Ang. 15°

50105AG	H1mm
50105BG	H2mm
50105CG	H3mm



Pilar Definitivo Ang. 25°

50105AH	H1mm
50105BH	H2mm
50105CH	H3mm



Mini Pilar - Âng. 17°

80105BG	H2mm
80105CG	H3mm
80105DG	H4mm



Mini Pilar - Âng. 30°

80105CH	H3mm
80105DH	H4mm



Pilar O'ring



900105A	H1mm
900105B	H2mm
900105C	H3mm
900105D	H4mm
900105E	H5mm
900105F	H6mm



Mini pilar  
Esteticone



801004A	H1mm
801004B	H2mm
801004C	H3mm
801004D	H4mm
801004E	H5mm
801004F	H6mm



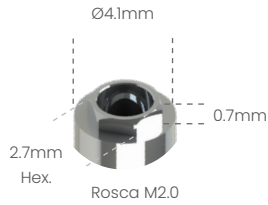
Parafuso  
de Fixação

- M20HX
- M20QU



Possibilita a técnica de Plataforma Switching com o Sistema HE 5.0 3i®

Análogo  
100105



Transfer mold.  
Aberta  
200105A



Transfer mold.  
Fechada  
200105B



Cicatrizador



300105B	H2mm
300105C	H3mm
300105D	H4mm
300105E	H5mm
300105F	H6mm

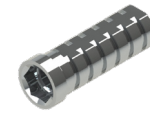


Cicatrizador  
Tampa  
301105



Pilar  
Definitivo

500105A	H1mm
500105B	H2mm
500105C	H3mm
500105D	H4mm



Pilar  
Provisório

- 400105C
- 400105S



Ucla  
Plástica

- 600105C
- 600105S



Ucla  
Base Metálica

- 700105C
- 700105S



Mini pilar  
Cônico



800105A	H1mm
800105B	H2mm
800105C	H3mm
800105D	H4mm
800105E	H5mm
800105F	H6mm



Pilar Definitivo Ang. 15°

50105AG	H1mm
50105BG	H2mm
50105CG	H3mm



Pilar Definitivo Ang. 25°

50105AH	H1mm
50105BH	H2mm
50105CH	H3mm



Mini Pilar - Âng. 17°

80105BG	H2mm
80105CG	H3mm
80105DG	H4mm



Mini Pilar - Âng. 30°

80105CH	H3mm
80105DH	H4mm



Pilar O'ring



900105A	H1mm
900105B	H2mm
900105C	H3mm
900105D	H4mm
900105E	H5mm
900105F	H6mm



Mini pilar  
Esteticone



801004A	H1mm
801004B	H2mm
801004C	H3mm
801004D	H4mm
801004E	H5mm
801004F	H6mm



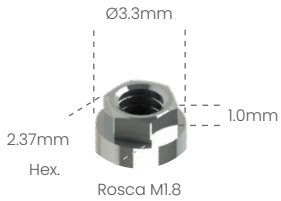
Parafuso  
de Fixação

- M20HX
- M20QU





Análogo  
100102



Transfer mold.  
Aberta  
200102A



Transfer mold.  
Fechada  
200102B



Cicatrizador



300102B	H2mm
300102C	H3mm
300102D	H4mm
300102E	H5mm
300102F	H6mm



Ucla  
Plástica

- 600102C
- 600102S



Ucla  
Base Metálica

- 700102C
- 700102S



Mini pilar  
Cônico



800102A	H1mm
800102B	H2mm
800102C	H3mm
800102D	H4mm
800102E	H5mm
800102F	H6mm



Mini Pilar - Âng. 17°



80102BG	H2mm
80102CG	H3mm
80102DG	H4mm

Mini Pilar - Âng. 30°



80102CH	H3mm
80102DH	H4mm



Pilar  
O'ring



900102A	H1mm
900102B	H2mm
900102C	H3mm
900102D	H4mm
900102E	H5mm
900102F	H6mm

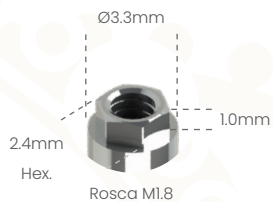


Parafuso  
de Fixação

- M18HX
- M18QU



Análogo  
100102



Transfer mold.  
Aberta  
200103A



Transfer mold.  
Fechada  
200103B



Cicatrizador



300102B	H2mm
300102C	H3mm
300102D	H4mm
300102E	H5mm
300102F	H6mm



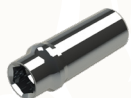
Ucla  
Plástica

- 600103C
- 600103S



Ucla  
Base Metálica

- 700103C
- 700103S



Pilar  
Definitivo

500103A	H1mm
500103B	H2mm
500103C	H3mm
500103D	H4mm



Mini pilar  
Cônico



800102A	H1mm
800102B	H2mm
800102C	H3mm
800102D	H4mm
800102E	H5mm
800102F	H6mm



Parafuso  
de Fixação

- M18HX
- M18QU



Possibilita a técnica de Plataforma Switching com o Sistema HE 5.0 3i®

**Análogo**

100105



Ø4.1mm

2.7mm  
Hex.

Rosca M2.0



**Transfer mold.  
Aberta**

200105A



**Transfer mold.  
Fechada**

200105B



**Cicatrizador  
Tampa**

301105



**Cicatrizador**

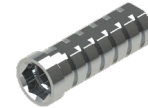


300105B	H2mm
300105C	H3mm
300105D	H4mm
300105E	H5mm
300105F	H6mm



**Pilar  
Definitivo**

500105A	H1mm
500105B	H2mm
500105C	H3mm
500105D	H4mm



**Pilar  
Provisório**

- 400105C
- 400105S



**Ucla  
Plástica**

- 600105C
- 600105S



**Ucla  
Base Metálica**

- 700105C
- 700105S



**Mini pilar  
Cônico**



800105A	H1mm
800105B	H2mm
800105C	H3mm
800105D	H4mm
800105E	H5mm
800105F	H6mm



**Pilar Definitivo Ang. 15°**

50105AG	H1mm
50105BG	H2mm
50105CG	H3mm



**Pilar Definitivo Ang. 25°**

50105AH	H1mm
50105BH	H2mm
50105CH	H3mm



**Mini Pilar – Âng. 17°**

80105BG	H2mm
80105CG	H3mm
80105DG	H4mm



**Mini Pilar – Âng. 30°**

80105CH	H3mm
80105DH	H4mm



**Pilar O'ring**



900105A	H1mm
900105B	H2mm
900105C	H3mm
900105D	H4mm
900105E	H5mm
900105F	H6mm



**Mini pilar  
Esteticone**



801004A	H1mm
801004B	H2mm
801004C	H3mm
801004D	H4mm
801004E	H5mm
801004F	H6mm



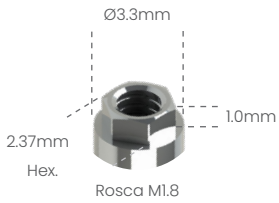
**Parafuso  
de Fixação**

- M20HX
- M20QU



**Análogo**

100102



**Transfer mold.  
Aberta**

200102A



**Transfer mold.  
Fechada**

200102B



**Cicatrizador**



300102B	H2mm
300102C	H3mm
300102D	H4mm
300102E	H5mm
300102F	H6mm



**Pilar  
Provisório**

- 400102C
- 400102S



**Ucla  
Plástica**

- 600102C
- 600102S



**Ucla  
Base Metálica**

- 700102C
- 700102S



**Mini pilar  
Cônico**



800102A	H1mm
800102B	H2mm
800102C	H3mm
800102D	H4mm
800102E	H5mm
800102F	H6mm



**Mini Pilar - Âng. 17°**



80102BG	H2mm
80102CG	H3mm
80102DG	H4mm



**Mini Pilar - Âng. 30°**

80102CH	H3mm
80102DH	H4mm



**Pilar  
O'ring**



900102A	H1mm
900102B	H2mm
900102C	H3mm
900102D	H4mm
900102E	H5mm
900102F	H6mm



**Parafuso  
de Fixação**

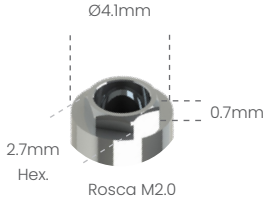
- M18HX
- M18QU



Possibilita a técnica de Plataforma Switching com o Sistema HE 5.0 3i\*

**Análogo**

100105



**Transfer mold. Aberta**

200105A



**Transfer mold. Fechada**

200105B



**Cicatrizador Tampa**

301105



**Cicatrizador**

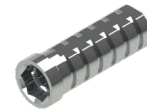


300105B	H2mm
300105C	H3mm
300105D	H4mm
300105E	H5mm
300105F	H6mm



**Pilar Definitivo**

500105A	H1mm
500105B	H2mm
500105C	H3mm
500105D	H4mm



**Pilar Provisório**

- 400105C
- 400105S



**Ucla Plástica**

- 600105C
- 600105S



**Ucla Base Metálica**

- 700105C
- 700105S



**Mini pilar Cônico**



800105A	H1mm
800105B	H2mm
800105C	H3mm
800105D	H4mm
800105E	H5mm
800105F	H6mm



**Pilar Definitivo Ang. 15°**

50105AG	H1mm
50105BG	H2mm
50105CG	H3mm



**Pilar Definitivo Ang. 25°**

50105AH	H1mm
50105BH	H2mm
50105CH	H3mm



**Mini Pilar - Âng. 17°**

80105BG	H2mm
80105CG	H3mm
80105DG	H4mm



**Mini Pilar - Âng. 30°**

80105CH	H3mm
80105DH	H4mm



**Pilar O'ring**



900105A	H1mm
900105B	H2mm
900105C	H3mm
900105D	H4mm
900105E	H5mm
900105F	H6mm



**Mini pilar Esteticone**



801004A	H1mm
801004B	H2mm
801004C	H3mm
801004D	H4mm
801004E	H5mm
801004F	H6mm



**Parafuso de Fixação**

- M20HX
- M20QU



Análogo

100110



Ø5.0mm

3.3mm  
Hex.

Rosca M2.5

1.0mm



Transfer mold.  
Aberta  
200110A



Transfer mold.  
Fechada  
200110B



Cicatrizador



300110B	H2mm
300110C	H3mm
300110D	H4mm
300110E	H5mm
300110F	H6mm



Pilar  
Provisório

- 400110C
- 400110S



Ucla  
Plástica

- 600110C
- 600110S



Ucla  
Base Metálica

- 700110C
- 700110S



Mini pilar  
Cônico



800110A	H1mm
800110B	H2mm
800110C	H3mm
800110D	H4mm
800110E	H5mm
800110F	H6mm



Mini Pilar - Âng. 17°



80110BG	H2mm
80110CG	H3mm
80110DG	H4mm



Mini Pilar - Âng. 30°

80110CH	H3mm
80110DH	H4mm



Parafuso  
de Fixação

- M25HX
- M25QU



Análogo

100104



Ø3.4mm

2.55mm  
Hex.

Rosca M2.0

0.7mm



Transfer mold.  
Aberta  
200104A



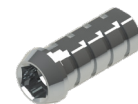
Transfer mold.  
Fechada  
200104B



Cicatrizador



300104B	H2mm
300104C	H3mm
300104D	H4mm
300104E	H5mm
300104F	H6mm



Pilar  
Provisório

- 400104C
- 400104S



Ucla  
Plástica

- 600104C
- 600104S



Ucla  
Base Metálica

- 700104C
- 700104S



Mini pilar  
Cônico



800104A	H1mm
800104B	H2mm
800104C	H3mm
800104D	H4mm
800104E	H5mm
800104F	H6mm



Mini Pilar - Âng. 17°



80104BG	H2mm
80104CG	H3mm
80104DG	H4mm



Mini Pilar - Âng. 30°

80104CH	H3mm
80104DH	H4mm



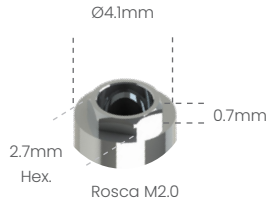
Parafuso  
de Fixação

- M20HX
- M20QU



Possibilita a técnica de Plataforma Switching com o Sistema HE 5.0 3i\*

**Análogo**  
100105



**Transfer mold. Aberta**  
200105A



**Transfer mold. Fechada**  
200105B



**Cicatrizador Tampa**  
301105



**Cicatrizador**

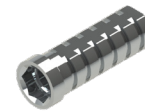


300105B	H2mm
300105C	H3mm
300105D	H4mm
300105E	H5mm
300105F	H6mm



**Pilar Definitivo**

500105A	H1mm
500105B	H2mm
500105C	H3mm
500105D	H4mm



**Pilar Provisório**

- 400105C
- 400105S



**Ucla Plástica**

- 600105C
- 600105S



**Ucla Base Metálica**

- 700105C
- 700105S



**Mini pilar Cônico**



800105A	H1mm
800105B	H2mm
800105C	H3mm
800105D	H4mm
800105E	H5mm
800105F	H6mm



**Pilar Definitivo Ang. 15°**

50105AG	H1mm
50105BG	H2mm
50105CG	H3mm



**Pilar Definitivo Ang. 25°**

50105AH	H1mm
50105BH	H2mm
50105CH	H3mm



**Mini Pilar - Âng. 17°**

80105BG	H2mm
80105CG	H3mm
80105DG	H4mm



**Mini Pilar - Âng. 30°**

80105CH	H3mm
80105DH	H4mm



**Pilar O'ring**



900105A	H1mm
900105B	H2mm
900105C	H3mm
900105D	H4mm
900105E	H5mm
900105F	H6mm



**Mini pilar Esteticone**



801004A	H1mm
801004B	H2mm
801004C	H3mm
801004D	H4mm
801004E	H5mm
801004F	H6mm



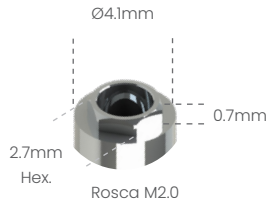
**Parafuso de Fixação**

- M20HX
- M20QU



Possibilita a técnica de Plataforma Switching com o Sistema HE 5.0 3j®

Análogo  
100105



Transfer mold.  
Aberta  
200105A



Transfer mold.  
Fechada  
200105B



Cicatrizador  
Tampa  
301105



Cicatrizador

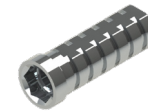


300105B	H2mm
300105C	H3mm
300105D	H4mm
300105E	H5mm
300105F	H6mm



Pilar  
Definitivo

500105A	H1mm
500105B	H2mm
500105C	H3mm
500105D	H4mm



Pilar  
Provisório

- 400105C
- 400105S



Ucla  
Plástica

- 600105C
- 600105S



Ucla  
Base Metálica

- 700105C
- 700105S



Mini pilar  
Cônico



800105A	H1mm
800105B	H2mm
800105C	H3mm
800105D	H4mm
800105E	H5mm
800105F	H6mm



Pilar Definitivo Ang. 15°

50105AG	H1mm
50105BG	H2mm
50105CG	H3mm



Pilar Definitivo Ang. 25°

50105AH	H1mm
50105BH	H2mm
50105CH	H3mm



Mini Pilar - Âng. 17°

80105BG	H2mm
80105CG	H3mm
80105DG	H4mm



Mini Pilar - Âng. 30°

80105CH	H3mm
80105DH	H4mm



Pilar O'ring



900105A	H1mm
900105B	H2mm
900105C	H3mm
900105D	H4mm
900105E	H5mm
900105F	H6mm



Mini pilar  
Esteticone



801004A	H1mm
801004B	H2mm
801004C	H3mm
801004D	H4mm
801004E	H5mm
801004F	H6mm



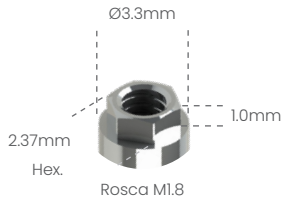
Parafuso  
de Fixação

- M20HX
- M20QU



Análogo

100102



Transfer mold.  
Aberta

200102A



Transfer mold.  
Fechada

200102B



Cicatrizador



300102B	H2mm
300102C	H3mm
300102D	H4mm
300102E	H5mm
300102F	H6mm



Pilar  
Provisório

- 400102C
- 400102S



Ucla  
Plástica

- 600102C
- 600102S



Ucla  
Base Metálica

- 700102C
- 700102S



Mini pilar  
Cônico



800102A	H1mm
800102B	H2mm
800102C	H3mm
800102D	H4mm
800102E	H5mm
800102F	H6mm



Mini Pilar - Âng. 17°



80102BG	H2mm
80102CG	H3mm
80102DG	H4mm

Mini Pilar - Âng. 30°



80102CH	H3mm
80102DH	H4mm



Pilar  
O'ring



900102A	H1mm
900102B	H2mm
900102C	H3mm
900102D	H4mm
900102E	H5mm
900102F	H6mm



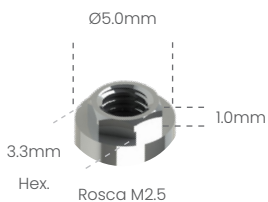
Parafuso  
de Fixação

- M18HX
- M18QU



Análogo

100110



Transfer mold.  
Aberta

200110A



Transfer mold.  
Fechada

200110B



Cicatrizador



300110B	H2mm
300110C	H3mm
300110D	H4mm
300110E	H5mm
300110F	H6mm



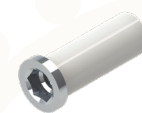
Pilar  
Provisório

- 400110C
- 400110S



Ucla  
Plástica

- 600110C
- 600110S



Ucla  
Base Metálica

- 700110C
- 700110S



Mini pilar  
Cônico



800110A	H1mm
800110B	H2mm
800110C	H3mm
800110D	H4mm
800110E	H5mm
800110F	H6mm



Mini Pilar - Âng. 17°



80110BG	H2mm
80110CG	H3mm
80110DG	H4mm

Mini Pilar - Âng. 30°



80110CH	H3mm
80110DH	H4mm



Parafuso  
de Fixação

- M25HX
- M25QU

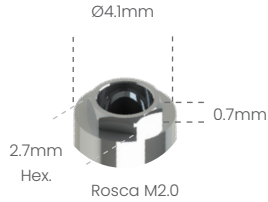




Possibilita a técnica de Plataforma Switching com o Sistema HE 5.0 3j®

**Análogo**

100105



**Transfer mold. Aberta**

200105A



**Transfer mold. Fechada**

200105B



**Cicatrizador Tampa**

301105



**Cicatrizador**

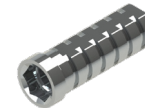


300105B	H2mm
300105C	H3mm
300105D	H4mm
300105E	H5mm
300105F	H6mm



**Pilar Definitivo**

500105A	H1mm
500105B	H2mm
500105C	H3mm
500105D	H4mm



**Pilar Provisório**

- 400105C
- 400105S



**Ucla Plástica**

- 600105C
- 600105S



**Ucla Base Metálica**

- 700105C
- 700105S



**Mini pilar Cônico**



800105A	H1mm
800105B	H2mm
800105C	H3mm
800105D	H4mm
800105E	H5mm
800105F	H6mm



**Pilar Definitivo Ang. 15°**

50105AG	H1mm
50105BG	H2mm
50105CG	H3mm



**Pilar Definitivo Ang. 25°**

50105AH	H1mm
50105BH	H2mm
50105CH	H3mm



**Mini Pilar - Âng. 17°**

80105BG	H2mm
80105CG	H3mm
80105DG	H4mm



**Mini Pilar - Âng. 30°**

80105CH	H3mm
80105DH	H4mm



**Pilar O'ring**



900105A	H1mm
900105B	H2mm
900105C	H3mm
900105D	H4mm
900105E	H5mm
900105F	H6mm



**Mini pilar Esteticone**



801004A	H1mm
801004B	H2mm
801004C	H3mm
801004D	H4mm
801004E	H5mm
801004F	H6mm



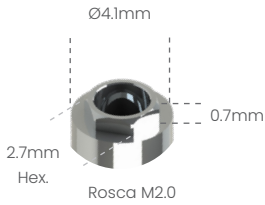
**Parafuso de Fixação**

- M20HX
- M20QU



Possibilita a técnica de Plataforma Switching com o Sistema HE 5.0 3i®

Análogo  
100105



Transfer mold.  
Aberta  
200105A



Transfer mold.  
Fechada  
200105B



Cicatrizador  
Tampa  
301105



Cicatrizador

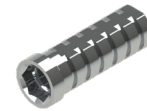


300105B	H2mm
300105C	H3mm
300105D	H4mm
300105E	H5mm
300105F	H6mm



Pilar  
Definitivo

500105A	H1mm
500105B	H2mm
500105C	H3mm
500105D	H4mm



Pilar  
Provisório

- 400105C
- 400105S



Ucla  
Plástica

- 600105C
- 600105S



Ucla  
Base Metálica

- 700105C
- 700105S



Mini pilar  
Cônico



800105A	H1mm
800105B	H2mm
800105C	H3mm
800105D	H4mm
800105E	H5mm
800105F	H6mm



Pilar Definitivo Ang. 15°

50105AG	H1mm
50105BG	H2mm
50105CG	H3mm



Pilar Definitivo Ang. 25°

50105AH	H1mm
50105BH	H2mm
50105CH	H3mm



Mini Pilar - Âng. 17°

80105BG	H2mm
80105CG	H3mm
80105DG	H4mm



Mini Pilar - Âng. 30°

80105CH	H3mm
80105DH	H4mm



Pilar O'ring



900105A	H1mm
900105B	H2mm
900105C	H3mm
900105D	H4mm
900105E	H5mm
900105F	H6mm



Mini pilar  
Esteticone



801004A	H1mm
801004B	H2mm
801004C	H3mm
801004D	H4mm
801004E	H5mm
801004F	H6mm

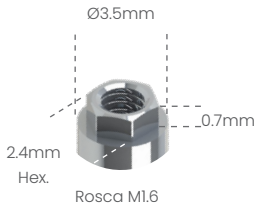


Parafuso  
de Fixação

- M20HX
- M20QU



Análogo  
100101



Transfer mold.  
Aberta  
200101A



Transfer mold.  
Fechada  
200101B



Cicatrizador



300101B	H2mm
300101C	H3mm
300101D	H4mm
300101E	H5mm
300101F	H6mm



Pilar  
Provisório

- 400101C
- 400101S



Ucla  
Plástica

- 600101C
- 600101S



Ucla  
Base Metálica

- 700101C
- 700101S



Mini pilar  
Cônico



800101A	H1mm
800101B	H2mm
800101C	H3mm
800101D	H4mm
800101E	H5mm
800101F	H6mm



Mini Pilar - Âng. 17°

80101BG	H2mm
80101CG	H3mm
80101DG	H4mm



Mini Pilar - Âng. 30°

80101CH	H3mm
80101DH	H4mm



Parafuso  
de Fixação

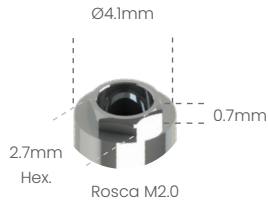
- M16HX
- M16QU



Possibilita a técnica de Plataforma Switching com o Sistema HE 5.0 3i\*

**Análogo**

100105



**Transfer mold. Aberta**

200105A



**Transfer mold. Fechada**

200105B



**Cicatrizador Tampa**

301105



**Cicatrizador**

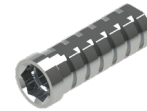


300105B	H2mm
300105C	H3mm
300105D	H4mm
300105E	H5mm
300105F	H6mm



**Pilar Definitivo**

500105A	H1mm
500105B	H2mm
500105C	H3mm
500105D	H4mm



**Pilar Provisório**

- 400105C
- 400105S



**Ucla Plástica**

- 600105C
- 600105S



**Ucla Base Metálica**

- 700105C
- 700105S



**Mini pilar Cônico**



800105A	H1mm
800105B	H2mm
800105C	H3mm
800105D	H4mm
800105E	H5mm
800105F	H6mm



**Pilar Definitivo Ang. 15°**

50105AG	H1mm
50105BG	H2mm
50105CG	H3mm



**Pilar Definitivo Ang. 25°**

50105AH	H1mm
50105BH	H2mm
50105CH	H3mm



**Mini Pilar - Âng. 17°**

80105BG	H2mm
80105CG	H3mm
80105DG	H4mm



**Mini Pilar - Âng. 30°**

80105CH	H3mm
80105DH	H4mm



**Pilar O'ring**



900105A	H1mm
900105B	H2mm
900105C	H3mm
900105D	H4mm
900105E	H5mm
900105F	H6mm



**Mini pilar Esteticone**



801004A	H1mm
801004B	H2mm
801004C	H3mm
801004D	H4mm
801004E	H5mm
801004F	H6mm



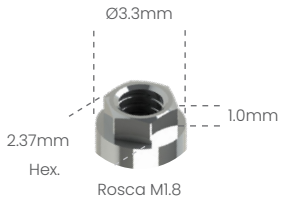
**Parafuso de Fixação**

- M20HX
- M20QU



Análogo

100102



Transfer mold.  
Aberta

200102A



Transfer mold.  
Fechada

200102B



Cicatrizador



300102B	H2mm
300102C	H3mm
300102D	H4mm
300102E	H5mm
300102F	H6mm



Ucla  
Plástica

- 600102C
- 600102S



Ucla  
Base Metálica

- 700102C
- 700102S



Mini pilar  
Cônico



800102A	H1mm
800102B	H2mm
800102C	H3mm
800102D	H4mm
800102E	H5mm
800102F	H6mm



Mini Pilar - Âng. 17°



80102BG	H2mm
80102CG	H3mm
80102DG	H4mm

Mini Pilar - Âng. 30°



80102CH	H3mm
80102DH	H4mm



Pilar  
O'ring



900102A	H1mm
900102B	H2mm
900102C	H3mm
900102D	H4mm
900102E	H5mm
900102F	H6mm



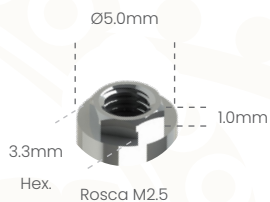
Parafuso  
de Fixação

- M18HX
- M18QU



Análogo

100110



Transfer mold.  
Aberta

200110A



Transfer mold.  
Fechada

200110B



Cicatrizador



300110B	H2mm
300110C	H3mm
300110D	H4mm
300110E	H5mm
300110F	H6mm



Ucla  
Plástica

- 600110C
- 600110S



Ucla  
Base Metálica

- 700110C
- 700110S



Mini pilar  
Cônico



800110A	H1mm
800110B	H2mm
800110C	H3mm
800110D	H4mm
800110E	H5mm
800110F	H6mm



Mini Pilar - Âng. 17°



80110BG	H2mm
80110CG	H3mm
80110DG	H4mm

Mini Pilar - Âng. 30°



80110CH	H3mm
80110DH	H4mm



Parafuso  
de Fixação

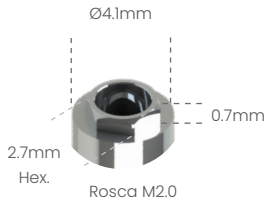
- M25HX
- M25QU



Possibilita a técnica de Plataforma Switching com o Sistema HE 5.0 3i®

**Análogo**

100105



**Transfer mold. Aberta**

200105A



**Transfer mold. Fechada**

200105B



**Cicatrizador Tampa**

301105



**Cicatrizador**

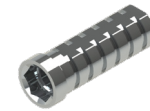


300105B	H2mm
300105C	H3mm
300105D	H4mm
300105E	H5mm
300105F	H6mm



**Pilar Definitivo**

500105A	H1mm
500105B	H2mm
500105C	H3mm
500105D	H4mm



**Pilar Provisório**

- 400105C
- 400105S



**Ucla Plástica**

- 600105C
- 600105S



**Ucla Base Metálica**

- 700105C
- 700105S



**Mini pilar Cônico**



800105A	H1mm
800105B	H2mm
800105C	H3mm
800105D	H4mm
800105E	H5mm
800105F	H6mm



**Pilar Definitivo Ang. 15°**

50105AG	H1mm
50105BG	H2mm
50105CG	H3mm



**Pilar Definitivo Ang. 25°**

50105AH	H1mm
50105BH	H2mm
50105CH	H3mm



**Mini Pilar - Âng. 17°**

80105BG	H2mm
80105CG	H3mm
80105DG	H4mm



**Mini Pilar - Âng. 30°**

80105CH	H3mm
80105DH	H4mm



**Pilar O'ring**



900105A	H1mm
900105B	H2mm
900105C	H3mm
900105D	H4mm
900105E	H5mm
900105F	H6mm



**Mini pilar Esteticone**



801004A	H1mm
801004B	H2mm
801004C	H3mm
801004D	H4mm
801004E	H5mm
801004F	H6mm



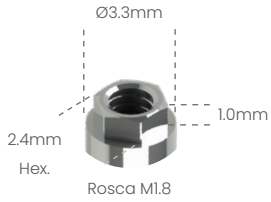
**Parafuso de Fixação**

- M20HX
- M20QU



Análogo

100102



Transfer mold.  
Aberta

200103A



Transfer mold.  
Fechada

200103B



Cicatrizador



300102B	H2mm
300102C	H3mm
300102D	H4mm
300102E	H5mm
300102F	H6mm



Pilar  
Provisório

- 400103C
- 400103S



Ucla  
Plástica

- 600103C
- 600103S



Ucla  
Base Metálica

- 700103C
- 700103S



Pilar  
Definitivo

500103A	H1mm
500103B	H2mm
500103C	H3mm
500103D	H4mm



Mini pilar  
Cônico



800102A	H1mm
800102B	H2mm
800102C	H3mm
800102D	H4mm
800102E	H5mm
800102F	H6mm



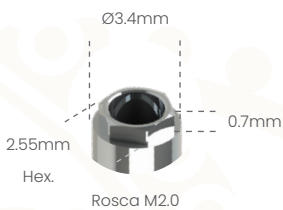
Parafuso  
de Fixação

- M18HX
- M18QU



Análogo

100104



Transfer mold.  
Aberta

200104A



Transfer mold.  
Fechada

200104B



Cicatrizador



300104B	H2mm
300104C	H3mm
300104D	H4mm
300104E	H5mm
300104F	H6mm



Pilar  
Provisório

- 400104C
- 400104S



Ucla  
Plástica

- 600104C
- 600104S



Ucla  
Base Metálica

- 700104C
- 700104S



Mini pilar  
Cônico



800104A	H1mm
800104B	H2mm
800104C	H3mm
800104D	H4mm
800104E	H5mm
800104F	H6mm



Mini Pilar - Âng. 17°



80104BG	H2mm
80104CG	H3mm
80104DG	H4mm



Mini Pilar - Âng. 30°

80104CH	H3mm
80104DH	H4mm



Parafuso  
de Fixação

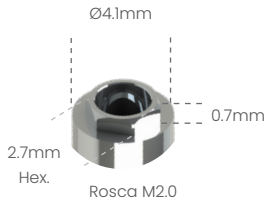
- M20HX
- M20QU



Possibilita a técnica de Plataforma Switching com o Sistema HE 5.0 3i®

**Análogo**

100105



**Transfer mold. Aberta**

200105A



**Transfer mold. Fechada**

200105B



**Cicatrizador Tampa**

301105



**Cicatrizador**

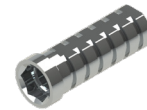


300105B	H2mm
300105C	H3mm
300105D	H4mm
300105E	H5mm
300105F	H6mm



**Pilar Definitivo**

500105A	H1mm
500105B	H2mm
500105C	H3mm
500105D	H4mm



**Pilar Provisório**

- 400105C
- 400105S

**Ucla Plástica**



- 600105C
- 600105S

**Ucla Base Metálica**



- 700105C
- 700105S



**Mini pilar Cônico**



800105A	H1mm
800105B	H2mm
800105C	H3mm
800105D	H4mm
800105E	H5mm
800105F	H6mm

**Pilar Definitivo Ang. 15°**



50105AG	H1mm
50105BG	H2mm
50105CG	H3mm

**Pilar Definitivo Ang. 25°**



50105AH	H1mm
50105BH	H2mm
50105CH	H3mm

**Mini Pilar - Âng. 17°**



80105BG	H2mm
80105CG	H3mm
80105DG	H4mm



**Mini Pilar - Âng. 30°**

80105CH	H3mm
80105DH	H4mm



**Pilar O'ring**



900105A	H1mm
900105B	H2mm
900105C	H3mm
900105D	H4mm
900105E	H5mm
900105F	H6mm



**Mini pilar Esteticone**



801004A	H1mm
801004B	H2mm
801004C	H3mm
801004D	H4mm
801004E	H5mm
801004F	H6mm



**Parafuso de Fixação**

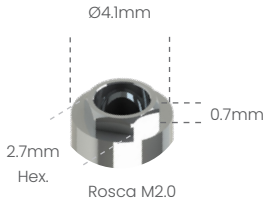
- M20HX
- M20QU





Possibilita a técnica de Plataforma Switching com o Sistema HE 5.0 3i®

**Análogo**  
100105



**Transfer mold. Aberta**  
200105A



**Transfer mold. Fechada**  
200105B



**Cicatrizador Tampa**  
301105



**Cicatrizador**

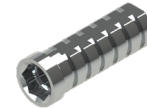


300105B	H2mm
300105C	H3mm
300105D	H4mm
300105E	H5mm
300105F	H6mm



**Pilar Definitivo**

500105A	H1mm
500105B	H2mm
500105C	H3mm
500105D	H4mm



**Pilar Provisório**

- 400105C
- 400105S



**Ucla Plástica**

- 600105C
- 600105S



**Ucla Base Metálica**

- 700105C
- 700105S



**Mini pilar Cônico**



800105A	H1mm
800105B	H2mm
800105C	H3mm
800105D	H4mm
800105E	H5mm
800105F	H6mm



**Pilar Definitivo Ang. 15°**

50105AG	H1mm
50105BG	H2mm
50105CG	H3mm



**Pilar Definitivo Ang. 25°**

50105AH	H1mm
50105BH	H2mm
50105CH	H3mm



**Mini Pilar - Âng. 17°**

80105BG	H2mm
80105CG	H3mm
80105DG	H4mm



**Mini Pilar - Âng. 30°**

80105CH	H3mm
80105DH	H4mm



**Pilar O'ring**



900105A	H1mm
900105B	H2mm
900105C	H3mm
900105D	H4mm
900105E	H5mm
900105F	H6mm



**Mini pilar Esteticone**



801004A	H1mm
801004B	H2mm
801004C	H3mm
801004D	H4mm
801004E	H5mm
801004F	H6mm



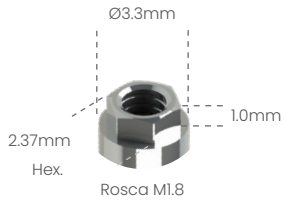
**Parafuso de Fixação**

- M20HX
- M20QU



Análogo

100102



Transfer mold.  
Aberta

200102A



Transfer mold.  
Fechada

200102B



Cicatrizador



300102B	H2mm
300102C	H3mm
300102D	H4mm
300102E	H5mm
300102F	H6mm



Pilar  
Provisório

- 400102C
- 400102S



Ucla  
Plástica

- 600102C
- 600102S



Ucla  
Base Metálica

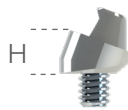
- 700102C
- 700102S



Mini pilar  
Cônico



800102A	H1mm
800102B	H2mm
800102C	H3mm
800102D	H4mm
800102E	H5mm
800102F	H6mm



Mini Pilar - Âng. 17°



80102BG	H2mm
80102CG	H3mm
80102DG	H4mm

Mini Pilar - Âng. 30°



80102CH	H3mm
80102DH	H4mm



Pilar  
O'ring



900102A	H1mm
900102B	H2mm
900102C	H3mm
900102D	H4mm
900102E	H5mm
900102F	H6mm



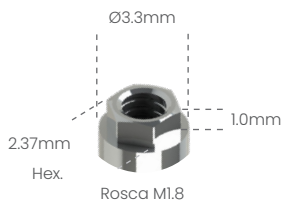
Parafuso  
de Fixação

- M18HX
- M18QU



Análogo

100102



Transfer mold.  
Aberta

200102A



Transfer mold.  
Fechada

200102B



Cicatrizador



300102B	H2mm
300102C	H3mm
300102D	H4mm
300102E	H5mm
300102F	H6mm



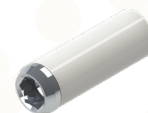
Pilar  
Provisório

- 400102C
- 400102S



Ucla  
Plástica

- 600102C
- 600102S



Ucla  
Base Metálica

- 700102C
- 700102S



Mini pilar  
Cônico



800102A	H1mm
800102B	H2mm
800102C	H3mm
800102D	H4mm
800102E	H5mm
800102F	H6mm



Mini Pilar - Âng. 17°



80102BG	H2mm
80102CG	H3mm
80102DG	H4mm

Mini Pilar - Âng. 30°



80102CH	H3mm
80102DH	H4mm



Pilar  
O'ring



900102A	H1mm
900102B	H2mm
900102C	H3mm
900102D	H4mm
900102E	H5mm
900102F	H6mm



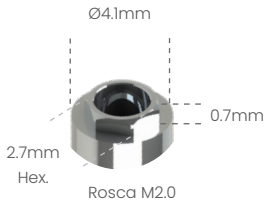
Parafuso  
de Fixação

- M18HX
- M18QU



Possibilita a técnica de Plataforma Switching com o Sistema HE 5.0 3i®

Análogo  
100105



Transfer mold.  
Aberta  
200105A



Transfer mold.  
Fechada  
200105B



Cicatrizador  
Tampa  
301105



Cicatrizador

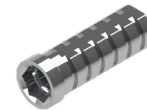


300105B	H2mm
300105C	H3mm
300105D	H4mm
300105E	H5mm
300105F	H6mm



Pilar  
Definitivo

500105A	H1mm
500105B	H2mm
500105C	H3mm
500105D	H4mm



Pilar  
Provisório

- 400105C
- 400105S



Ucla  
Plástica

- 600105C
- 600105S



Ucla  
Base Metálica

- 700105C
- 700105S



Mini pilar  
Cônico



800105A	H1mm
800105B	H2mm
800105C	H3mm
800105D	H4mm
800105E	H5mm
800105F	H6mm



Pilar Definitivo Ang. 15°

50105AG	H1mm
50105BG	H2mm
50105CG	H3mm



Pilar Definitivo Ang. 25°

50105AH	H1mm
50105BH	H2mm
50105CH	H3mm



Mini Pilar - Âng. 17°

80105BG	H2mm
80105CG	H3mm
80105DG	H4mm



Mini Pilar - Âng. 30°

80105CH	H3mm
80105DH	H4mm



Pilar O'ring



900105A	H1mm
900105B	H2mm
900105C	H3mm
900105D	H4mm
900105E	H5mm
900105F	H6mm



Mini pilar  
Esteticone



801004A	H1mm
801004B	H2mm
801004C	H3mm
801004D	H4mm
801004E	H5mm
801004F	H6mm



Parafuso  
de Fixação

- M20HX
- M20QU



Análogo

100110



Ø5.0mm

3.3mm  
Hex.

Rosca M2.5

1.0mm



Transfer mold.  
Aberta  
200110A



Transfer mold.  
Fechada  
200110B



Cicatrizador



300110B	H2mm
300110C	H3mm
300110D	H4mm
300110E	H5mm
300110F	H6mm



Pilar  
Provisório

- 400110C
- 400110S



Ucla  
Plástica

- 600110C
- 600110S



Ucla  
Base Metálica

- 700110C
- 700110S



Mini pilar  
Cônico



800110A	H1mm
800110B	H2mm
800110C	H3mm
800110D	H4mm
800110E	H5mm
800110F	H6mm



Mini Pilar - Âng. 17°



80110BG	H2mm
80110CG	H3mm
80110DG	H4mm



Mini Pilar - Âng. 30°

80110CH	H3mm
80110DH	H4mm



Parafuso  
de Fixação



- M25HX
- M25QU

Análogo

100102



Ø3.3mm

2.4mm  
Hex.

Rosca M1.8

1.0mm



Transfer mold.  
Aberta  
200102A



Transfer mold.  
Fechada  
200102B



Cicatrizador



300102B	H2mm
300102C	H3mm
300102D	H4mm
300102E	H5mm
300102F	H6mm



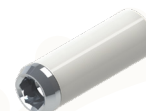
Pilar  
Provisório

- 400102C
- 400102S



Ucla  
Plástica

- 600102C
- 600102S



Ucla  
Base Metálica

- 700102C
- 700102S



Mini pilar  
Cônico



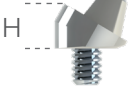
800102A	H1mm
800102B	H2mm
800102C	H3mm
800102D	H4mm
800102E	H5mm
800102F	H6mm



Mini Pilar - Âng. 17°



80102BG	H2mm
80102CG	H3mm
80102DG	H4mm



Mini Pilar - Âng. 30°

80102CH	H3mm
80102DH	H4mm



Pilar  
O'ring



900102A	H1mm
900102B	H2mm
900102C	H3mm
900102D	H4mm
900102E	H5mm
900102F	H6mm

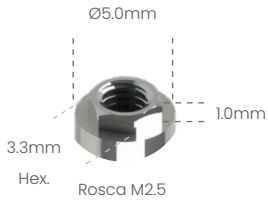


Parafuso  
de Fixação

- M18HX
- M18QU



Análogo  
100110



Transfer mold.  
Aberta  
200110A



Transfer mold.  
Fechada  
200110B



Cicatrizador



300110B	H2mm
300110C	H3mm
300110D	H4mm
300110E	H5mm
300110F	H6mm



Pilar  
Provisório

- 400110C
- 400110S



Ucla  
Plástica

- 600110C
- 600110S



Ucla  
Base Metálica

- 700110C
- 700110S



Mini pilar  
Cônico



800110A	H1mm
800110B	H2mm
800110C	H3mm
800110D	H4mm
800110E	H5mm
800110F	H6mm



Mini Pilar - Âng. 17°



80110BG	H2mm
80110CG	H3mm
80110DG	H4mm



Mini Pilar - Âng. 30°

80110CH	H3mm
80110DH	H4mm

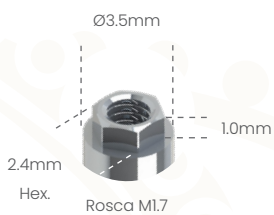


Parafuso  
de Fixação



- M25HX
- M25QU

Análogo  
100103



Transfer mold.  
Aberta  
200103A



Transfer mold.  
Fechada  
200103B



Cicatrizador



300103B	H2mm
300103C	H3mm
300103D	H4mm
300103E	H5mm
300103F	H6mm



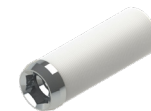
Pilar  
Provisório

- 400103C
- 400103S



Ucla  
Plástica

- 600103C
- 600103S



Ucla  
Base Metálica

- 700103C
- 700103S



Mini pilar  
Cônico



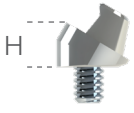
800103A	H1mm
800103B	H2mm
800103C	H3mm
800103D	H4mm
800103E	H5mm
800103F	H6mm



Mini Pilar - Âng. 17°



80103BG	H2mm
80103CG	H3mm
80103DG	H4mm



Mini Pilar - Âng. 30°

80103CH	H3mm
80103DH	H4mm



Parafuso  
de Fixação



- M17HX
- M17QU



Possibilita a usabilidade dos componentes no Sistema HE 5.0 Branemark®

**Análogo**

100112



Ø5.1mm



**Transfer mold. Aberta**

200112A



**Transfer mold. Fechada**

200112B



**Cicatrizador**



300112B	H2mm
300112C	H3mm
300112D	H4mm
300112E	H5mm
300112F	H6mm



**Pilar Provisório**

- 400112C
- 400112S



**Ucla Plástica**

- 600112C
- 600112S



**Ucla Base Metálica**

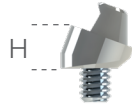
- 700112C
- 700112S



**Mini pilar Cônico**



800112A	H1mm
800112B	H2mm
800112C	H3mm
800112D	H4mm
800112E	H5mm
800112F	H6mm



**Mini Pilar - Âng. 17°**



80112BG	H2mm
80112CG	H3mm
80112DG	H4mm



**Mini Pilar - Âng. 30°**

80112CH	H3mm
80112DH	H4mm



**Parafuso de Fixação**

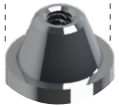
- M25HX
- M25QU



Análogo  
101005



Ø4.8mm



Rosca M1.4



Transfer  
mold. Aberta  
201005A



Transfer  
mold. Fechada  
201005B



Tampa  
de Proteção  
301005



Pilar  
Provisório  
401005



Pilar  
P/ Solda  
401005E (Solda)

Ø3.18mm



Barra de Titânio  
3.18mm  
T03180136

Ø0.8mm



Fio de Titânio  
0.80mm  
T00800136



Coping  
Plástico  
601005



Ucla Base  
Metálica  
701005



Parafuso  
de Fixação  
M14MU

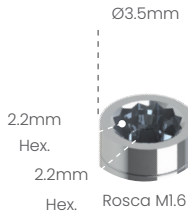


# Sistema Conexão Interna

- 
- 
- 
- 
-



Análogo  
100223



Transfer mold.  
Aberta  
200223A



Transfer mold.  
Fechada  
200223B



Cicatrizador



300223B	H2mm
300223C	H3mm
300223D	H4mm
300223E	H5mm
300223F	H6mm



Pilar  
Provisório

- 400223C
- 400223S



Ucla  
Plástica

- 600223C
- 600223S



Ucla  
Base Metálica

- 700223C
- 700223S



Mini pilar  
Cônico



800223A	H1mm
800223B	H2mm
800223C	H3mm
800223D	H4mm
800223E	H5mm
800223F	H6mm



Mini Pilar - Âng. 17°



80223BG	H2mm
80223CG	H3mm
80223DG	H4mm



Mini Pilar - Âng. 30°

80223CH	H3mm
80223DH	H4mm



Parafuso  
de Fixação

- M16HTR
- M16QTI



Análogo  
100222



Transfer mold.  
Aberta  
200222A



Transfer mold.  
Fechada  
200222B



Cicatrizador



300222B	H2mm
300222C	H3mm
300222D	H4mm
300222E	H5mm
300222F	H6mm



Pilar  
Provisório

- 400222C
- 400222S



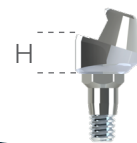
Ucla  
Plástica

- 600222C
- 600222S



Ucla  
Base Metálica

- 700222C
- 700222S



Mini Pilar - Âng. 17°



80222BG	H2mm
80222CG	H3mm
80222DG	H4mm



Mini Pilar - Âng. 30°

80222CH	H3mm
80222DH	H4mm

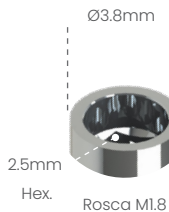


Parafuso  
de Fixação

- M16HTR
- M16QTI



Análogo  
100316



Transfer mold.  
Aberta  
200316A



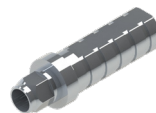
Transfer mold.  
Fechada  
200316B



Cicatrizador



300307B	H2mm
300307C	H3mm
300307D	H4mm
300307E	H5mm
300307F	H6mm



Pilar  
Provisório

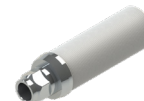
- 400316C
- 400316S

Possibilita a técnica de Plataforma Switching com o Sistema HI 4.5/5.0 SIN® e Sistema HI 3.75 a 5.0 Conexão®



Ucla  
Plástica

- 600316C
- 600316S



Ucla  
Base Metálica

- 700316C
- 700316S



Mini pilar  
Cônico



800316A	H1mm
800316B	H2mm
800316C	H3mm
800316D	H4mm
800316E	H5mm
800316F	H6mm

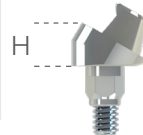


Mini Pilar - Âng. 17°

80316BG	H2mm
80316CG	H3mm
80316DG	H4mm

Mini Pilar - Âng. 30°

80316CH	H3mm
80316DH	H4mm



Pilar  
O'Ring

900316A	H1mm
900316B	H2mm
900316C	H3mm
900316D	H4mm
900316E	H5mm
900316F	H6mm

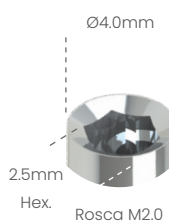


Parafuso  
de Fixação

- M18HCN
- M18QCN



Análogo  
100204



Transfer mold.  
Aberta  
200204A



Transfer mold.  
Fechada  
200204B



Cicatrizador



300204B	H2mm
300204C	H3mm
300204D	H4mm
300204E	H5mm
300204F	H6mm



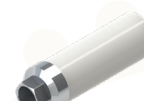
Pilar  
Provisório

- 400204C
- 400204S



Ucla  
Plástica

- 600204C
- 600204S



Ucla  
Base Metálica

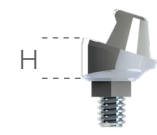
- 700204C
- 700204S



Mini pilar  
Cônico



800204A	H1mm
800204B	H2mm
800204C	H3mm
800204D	H4mm
800204E	H5mm
800204F	H6mm

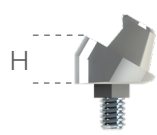


Mini Pilar - Âng. 17°

80204BG	H2mm
80204CG	H3mm
80204DG	H4mm

Mini Pilar - Âng. 30°

80204CH	H3mm
80204DH	H4mm



Pilar  
O'Ring



900204A	H1mm
900204B	H2mm
900204C	H3mm
900204D	H4mm
900204E	H5mm
900204F	H6mm



Parafuso  
de Fixação

- M20HX
- M20QU



Análogo  
100204



Ø4.0mm  
2.5mm  
Hex.  
Rosca M2.0



Transfer mold.  
Aberta  
200204A



Transfer mold.  
Fechada  
200204B



Cicatrizador



300204B	H2mm
300204C	H3mm
300204D	H4mm
300204E	H5mm
300204F	H6mm



Pilar  
Provisório

- 400204C
- 400204S



Ucla  
Plástica

- 600204C
- 600204S



Ucla  
Base Metálica

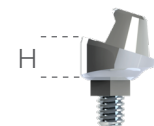
- 700204C
- 700204S



Mini pilar  
Cônico



800204A	H1mm
800204B	H2mm
800204C	H3mm
800204D	H4mm
800204E	H5mm
800204F	H6mm



Mini Pilar - Âng. 17°

80204BG	H2mm
80204CG	H3mm
80204DG	H4mm



Mini Pilar - Âng. 30°

80204CH	H3mm
80204DH	H4mm



Pilar  
O'Ring



900204A	H1mm
900204B	H2mm
900204C	H3mm
900204D	H4mm
900204E	H5mm
900204F	H6mm



Parafuso  
de Fixação

- M20HX
- M20QU



Análogo  
100800



Ø3.8mm  
2.4mm  
Hex.  
Rosca M1.8



Transfer mold.  
Aberta  
200800A



Transfer mold.  
Fechada  
200800B



Cicatrizador



Ø4.0	
300800B	H2mm
300800C	H3mm
300800D	H4mm
300800E	H5mm
300800F	H6mm



Cicatrizador



Ø4.8	
300803B	H2mm
300803C	H3mm
300803D	H4mm
300803E	H5mm
300803F	H6mm



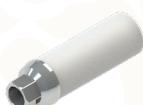
Pilar  
Provisório

- 400800C
- 400800S



Ucla  
Plástica

- 600800C
- 600800S



Ucla  
Base Metálica

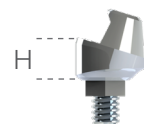
- 700800C
- 700800S



Mini pilar  
Cônico



800800A	H1mm
800800B	H2mm
800800C	H3mm
800800D	H4mm
800800E	H5mm
800800F	H6mm



Mini Pilar - Âng. 17°

80800BG	H2mm
80800CG	H3mm
80800DG	H4mm



Mini Pilar - Âng. 30°

80800CH	H3mm
80800DH	H4mm



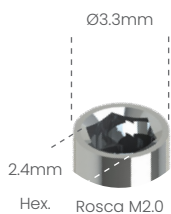
Parafuso  
de Fixação

- M18HMI



Possibilita a técnica de Plataforma Switching com o Sistema HI 4.0/5.0 Colosso®

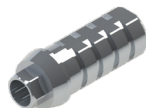
Análogo  
100211



Transfer mold.  
Aberta  
200211A



Transfer mold.  
Fechada  
200211B



Pilar  
Provisório  
● 400211C  
○ 400211S



Ucla Plástica  
● 600211C  
○ 600211S



Ucla  
Base Metálica  
● 700211C  
○ 700211S



Mini pilar  
Cônico



800211A	H1mm
800211B	H2mm
800211C	H3mm
800211D	H4mm
800211E	H5mm
800211F	H6mm



Mini Pilar - Âng. 17°



80211BG	H2mm
80211CG	H3mm
80211DG	H4mm



Mini Pilar - Âng. 30°

80211CH	H3mm
80211DH	H4mm



Parafuso  
de Fixação  
○ M20HX  
□ M20QU



Utilização

# Implacil de Bortoli®

## Sistema HI 3.3/3.5 Sistema HI Maestro 3.5/4.0/5.0

Análogo

100208



Ø3.5mm

2.3mm

Hex.

Rosca M1.8



Transfer mold.  
Aberta

200208A



Transfer mold.  
Fechada

200208B



Cicatrizador



300208B	H2mm
300208C	H3mm
300208D	H4mm
300208E	H5mm
300208F	H6mm



Ucla  
Plástica

- 600208C
- 600208S



Ucla  
Base Metálica

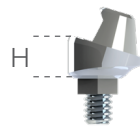
- 700208C
- 700208S



Mini pilar  
Cônico



800208A	H1mm
800208B	H2mm
800208C	H3mm
800208D	H4mm
800208E	H5mm
800208F	H6mm



Mini Pilar - Âng. 17°

80208BG	H2mm
80208CG	H3mm
80208DG	H4mm



Mini Pilar - Âng. 30°

80208CH	H3mm
80208DH	H4mm



Pilar  
O'ring



900208A	H1mm
900208B	H2mm
900208C	H3mm
900208D	H4mm



Parafuso  
de Fixação

- M18HX
- M18QU



Utilização

# Implacil de Bortoli®

## Sistema HI 3.75/4.0/4.3/4.75/5.0

Análogo

100209



Ø4.0mm

2.5mm

Hex.

Rosca M2.0



Transfer mold.  
Aberta

200209A



Transfer mold.  
Fechada

200209B



Cicatrizador



300209B	H2mm
300209C	H3mm
300209D	H4mm
300209E	H5mm
300209F	H6mm



Ucla  
Plástica

- 600209C
- 600209S



Ucla  
Base Metálica

- 700209C
- 700209S



Mini pilar  
Cônico



800209A	H1mm
800209B	H2mm
800209C	H3mm
800209D	H4mm
800209E	H5mm
800209F	H6mm



Mini Pilar - Âng. 17°

80209BG	H2mm
80209CG	H3mm
80209DG	H4mm



Mini Pilar - Âng. 30°

80209CH	H3mm
80209DH	H4mm



Pilar  
O'ring



900209A	H1mm
900209B	H2mm
900209C	H3mm
900209D	H4mm



Parafuso  
de Fixação

- M20HX
- M20QU



Legenda



Com travamento



Sem travamento



Hexagonal



Quadrado



Análogo

100120



Ø3.5mm

2.5mm

Hex.

Rosca M1.8



Transfer mold.  
Aberta

200120A



Transfer mold.  
Fechada

200120B



Pilar  
Provisório

- 400120C
- 400120S



Ucla  
Plástica

- 600120C
- 600120S



Ucla  
Base Metálica

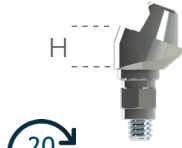
- 700120C
- 700120S



Mini pilar  
Cônico

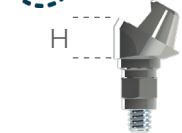
20  
N.cm

800120A	H1mm
800120B	H2mm
800120C	H3mm
800120D	H4mm
800120E	H5mm
800120F	H6mm



Mini Pilar - Âng. 17°

80120BG	H2mm
80120CG	H3mm
80120DG	H4mm



Mini Pilar - Âng. 30°

80120CH	H3mm
80120DH	H4mm



Parafuso  
de Fixação

- M18HSU
- M18QSU

20  
N.cm

Análogo

100209



Ø4.0mm

2.5mm

Hex.

Rosca M2.0



Transfer mold.  
Aberta

200209A



Transfer mold.  
Fechada

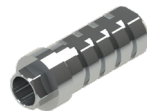
200209B



Cicatrizador

20  
N.cm

300209B	H2mm
300209C	H3mm
300209D	H4mm
300209E	H5mm
300209F	H6mm



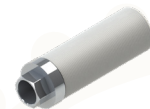
Pilar  
Provisório

- 400209C
- 400209S



Ucla  
Plástica

- 600209C
- 600209S



Ucla  
Base Metálica

- 700209C
- 700209S



Mini pilar  
Cônico

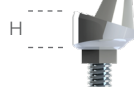
32  
N.cm

800209A	H1mm
800209B	H2mm
800209C	H3mm
800209D	H4mm
800209E	H5mm
800209F	H6mm



Mini Pilar - Âng. 17°

80209BG	H2mm
80209CG	H3mm
80209DG	H4mm



Mini Pilar - Âng. 30°

80209CH	H3mm
80209DH	H4mm



Pilar  
O'ring

20  
N.cm

900209A	H1mm
900209B	H2mm
900209C	H3mm
900209D	H4mm

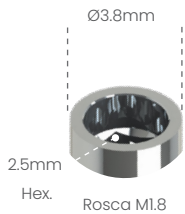


Parafuso  
de Fixação

- M20HX
- M20QU

32  
N.cm

Análogo  
100316



Transfer mold.  
Aberta  
200316A



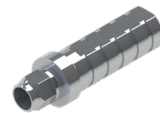
Transfer mold.  
Fechada  
200316B



Cicatrizador



300307B	H2mm
300307C	H3mm
300307D	H4mm
300307E	H5mm
300307F	H6mm



Pilar  
Provisório

- 400316C
- 400316S



Ucla  
Plástica

- 600316C
- 600316S



Ucla  
Base Metálica

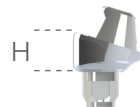
- 700316C
- 700316S



Mini pilar  
Cônico



800316A	H1mm
800316B	H2mm
800316C	H3mm
800316D	H4mm
800316E	H5mm
800316F	H6mm

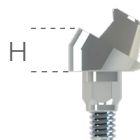


Mini Pilar - Âng. 17°

80316BG	H2mm
80316CG	H3mm
80316DG	H4mm

Mini Pilar - Âng. 30°

80316CH	H3mm
80316DH	H4mm



Pilar  
O'Ring



900316A	H1mm
900316B	H2mm
900316C	H3mm
900316D	H4mm
900316E	H5mm
900316F	H6mm



Parafuso  
de Fixação

- M18HCN
- M18QCN



Análogo  
100313



Transfer mold.  
Aberta  
200313A



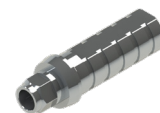
Transfer mold.  
Fechada  
200313B



Cicatrizador



300313B	H2mm
300313C	H3mm
300313D	H4mm
300313E	H5mm
300313F	H6mm



Pilar  
Provisório

- 400313C
- 400313S



Ucla  
Plástica

- 600313C
- 600313S



Ucla  
Base Metálica

- 700313C
- 700313S



Mini pilar  
Cônico



800313A	H1mm
800313B	H2mm
800313C	H3mm
800313D	H4mm
800313E	H5mm
800313F	H6mm



Mini Pilar - Âng. 17°

80313BG	H2mm
80313CG	H3mm
80313DG	H4mm

Mini Pilar - Âng. 30°

80313CH	H3mm
80313DH	H4mm

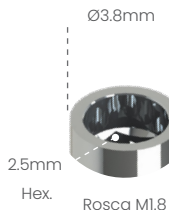


Parafuso  
de Fixação

- M16HTI
- M16QTI



Análogo  
100316



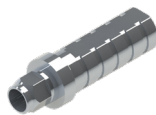
Transfer mold.  
Aberta  
200316A



Transfer mold.  
Fechada  
200316B



Cicatrizador  
20 N.cm



300307B	H2mm
300307C	H3mm
300307D	H4mm
300307E	H5mm
300307F	H6mm

**Pilar Provisório**

400316C
400316S



**Ucla Plástica**

600316C
600316S



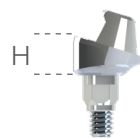
**Ucla Base Metálica**

700316C
700316S



Mini pilar  
Cônico  
20 N.cm

800316A	H1mm
800316B	H2mm
800316C	H3mm
800316D	H4mm
800316E	H5mm
800316F	H6mm



20 N.cm



Mini Pilar - Âng. 17°

80316BG	H2mm
80316CG	H3mm
80316DG	H4mm

Mini Pilar - Âng. 30°

80316CH	H3mm
80316DH	H4mm



20 N.cm

**Pilar O'Ring**

900316A	H1mm
900316B	H2mm
900316C	H3mm
900316D	H4mm
900316E	H5mm
900316F	H6mm

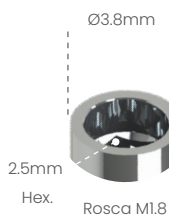


**Parafuso de Fixação**

M18HCN
M18QCN

20 N.cm

Análogo  
100316



Transfer mold.  
Aberta  
200316A



Transfer mold.  
Fechada  
200316B



Cicatrizador  
20 N.cm



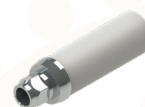
**Pilar Provisório**

400316C
400316S



**Ucla Plástica**

600316C
600316S



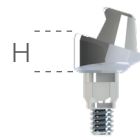
**Ucla Base Metálica**

700316C
700316S



Mini pilar  
Cônico  
20 N.cm

800316A	H1mm
800316B	H2mm
800316C	H3mm
800316D	H4mm
800316E	H5mm
800316F	H6mm



20 N.cm



Mini Pilar - Âng. 17°

80316BG	H2mm
80316CG	H3mm
80316DG	H4mm

Mini Pilar - Âng. 30°

80316CH	H3mm
80316DH	H4mm



20 N.cm

**Pilar O'Ring**

900316A	H1mm
900316B	H2mm
900316C	H3mm
900316D	H4mm
900316E	H5mm
900316F	H6mm



**Parafuso de Fixação**

M18HCN
M18QCN

20 N.cm



Análogo  
100113



Ø4.0mm

2.4mm  
Hex. Rosca M1.8



Transfer mold.  
Aberta  
200113A



Transfer mold.  
Fechada  
200113B



Cicatrizador



300113B	H2mm
300113C	H3mm
300113D	H4mm
300113E	H5mm
300113F	H6mm



Pilar  
Provisório

400113C	
400113S	

Possibilita a técnica de Plataforma Switching com o Sistema HI 5.0 Titanium Fix®



Ucla  
Plástica

600113C	
600113S	



Ucla  
Base Metálica

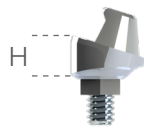
700113C	
700113S	



Mini pilar  
Cônico



800113A	H1mm
800113B	H2mm
800113C	H3mm
800113D	H4mm
800113E	H5mm
800113F	H6mm



Mini Pilar - Âng. 17°



80113BG	H2mm
80113CG	H3mm
80113DG	H4mm



Mini Pilar - Âng. 30°

80113CH	H3mm
80113DH	H4mm



Parafuso  
de Fixação

M18HX	
M18QU	



Análogo  
100799



Ø3.3mm

2.10mm  
Hex. Rosca M1.6



Transfer mold.  
Aberta  
200799A



Transfer mold.  
Fechada  
200799B



Cicatrizador



300799B	H2mm
300799C	H3mm
300799D	H4mm
300799E	H5mm
300799F	H6mm



Mini pilar  
Cônico



800799A	H1mm
800799B	H2mm
800799C	H3mm
800799D	H4mm
800799E	H5mm
800799F	H6mm



Parafuso  
de Fixação

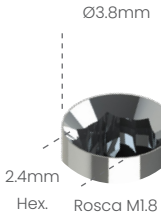
M16HMI	
--------	--



Utilização  
**MIS® Seven**

Sistema HI 3.75/4.2

Análogo  
100800



Transfer mold.  
Aberta  
200800A



Transfer mold.  
Fechada  
200800B



Cicatrizador  
20 N.cm



Cicatrizador  
20 N.cm

Ø4.0

300800B	H2mm
300800C	H3mm
300800D	H4mm
300800E	H5mm
300800F	H6mm

Ø4.8

300803B	H2mm
300803C	H3mm
300803D	H4mm
300803E	H5mm
300803F	H6mm



Pilar  
Provisório  
● 400800C  
○ 400800S



Ucla  
Plástica  
● 600800C  
○ 600800S



Ucla  
Base Metálica  
● 700800C  
○ 700800S



Mini pilar  
Cônico  
20 N.cm

800800A	H1mm
800800B	H2mm
800800C	H3mm
800800D	H4mm
800800E	H5mm
800800F	H6mm



Mini Pilar - Âng. 17°

80800BG	H2mm
80800CG	H3mm
80800DG	H4mm

Mini Pilar - Âng. 30°

80800CH	H3mm
80800DH	H4mm

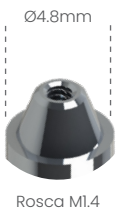


Parafuso  
de Fixação  
○ M18HMI  
20 N.cm

Utilização  
**Mult Unit**

Sistema 4.8

Análogo  
101005



Transfer  
mold. Aberta  
201005A



Transfer  
mold. Fechada  
201005B



Tampa  
de Proteção  
○ 301005  
10 N.cm



Pilar  
Provisório  
○ 401005



Pilar  
P/ Solda  
○ 401005E (Solda)

Ø3.18mm



Barra de Titânio  
3.18mm  
T03180136

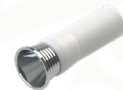
Ø0.8mm



Fio de Titânio  
0.80mm  
T00800136



Coping  
Plástico  
○ 601005




Ucla Base  
Metálica  
○ 701005



Parafuso  
de Fixação  
○ M14MU  
10 N.cm



Análogo

-  101004C
-  101004S



Ø4.8mm  
3.3mm  
Hex.



Rosca M1.4



Transfer mold.  
Aberta

-  20104CA



Transfer mold.  
Aberta



-  20104SA



Cicatrizador  
301004



Pilar  
Provisório

-  401004C
-  401004S





Coping  
Plástico

-  601004C
-  601004S



Ucla  
Base Metálica

-  701004C
-  701004S



Parafuso  
de Fixação

-  M1.4S

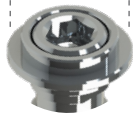


**Uclafix**



Uclafix

Ø3.5mm



Chave Hex. 1.2mm  
Parafuso M1.4



CÓDIGO

INFORMAÇÕES TÉCNICAS

701006

A Uclafix é um componente protético que permite reabilitar com sucesso casos onde o parafuso sairia por vestibular ou incisal, através da fixação do coping sobre o pilar personalizado, substituindo assim a cimentação.

Portanto, em casos críticos, devido a posição desfavorável do implante, a Uclafix trará uma solução estética e funcional.





O'ring Calcínável  
804105



Anel Calcínável  
805105



Barra Calcínável  
BARRA



Clip para Overdenture  
CLIPTEC



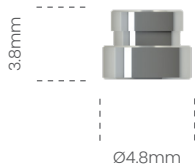
Clip 0°  
CLIP0



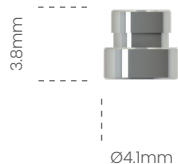
Clip 35°  
CLIP35



Clip 70°  
CLIP70



Cápsula Metálica O'ring  
802105



Cápsula Metálica O'ring Mini  
802105M



Anel O'ring para Cápsula Metálica  
ORING2



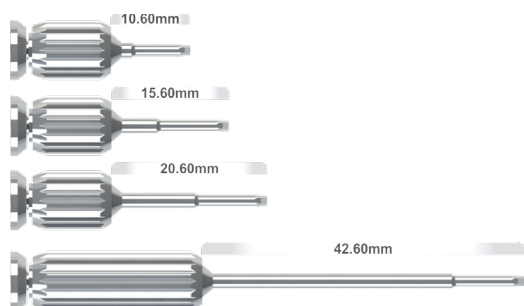
Anel O'ring para Cápsula Metálica Mini  
ORING3



Cápsula Plástica  
803105

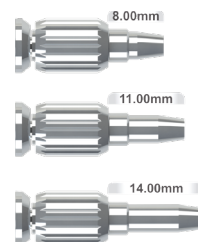
## CHAVE DIGITAL

	Curta	Média	Longa	Extra Longa
Fenda	CDFC	CDFM	CDFL	-
Hexagonal 0.9mm	CDH09C	CDH09M	CDH09L	-
Hexagonal 1.2mm	CDH12C	CDH12M	CDH12L	CDH12EL
Quadrada 1.3mm	CDQ13C	CDQ13M	CDQ13L	CDQ13EL
Torx	CDSTC	CDSTM	CDSTL	CDSTEL
Unigrip	CDUGC	CDUGM	CDUGL	CDUGEL
Dinâmica	CDDIC	CDDIM	CDDIL	-



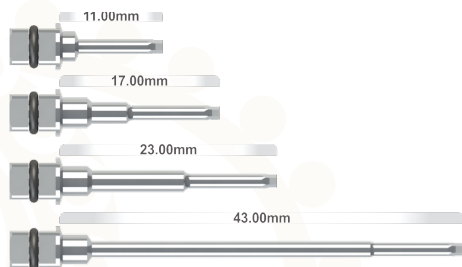
## CHAVE DIGITAL MULT UNIT

Curta	Média	Longa	Extra Longa
CDMUC	CDMUM	CDMUL	-



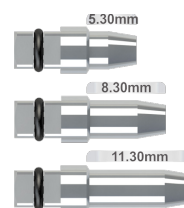
## CHAVE TORQUÍMETRO

	Curta	Média	Longa	Extra Longa
Hexagonal 0.9mm	CTH09C	CTH09M	CTH09L	-
Hexagonal 1.2mm	CTH12C	CTH12M	CTH12L	CTH12EL
Hexagonal 1.6mm	CTH16C	CTH16M	CTH16L	-
Quadrada 1.3mm	CTQ13C	CTQ13M	CTQ13L	CTQ13EL
Torx	CTSTC	CTSTM	CTSTL	CTSTEL
Unigrip	CTUGC	CTUGM	CTUGL	-
Dinâmica	CTDIC	CTDIM	CTDIL	-



## CHAVE TORQUÍMETRO MULT UNIT

Curta	Média	Longa	Extra Longa
CTMUC	CTMUM	CTMUL	-



## MAIS INSTRUMENTAIS



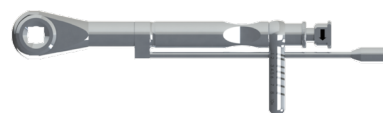
Adaptador Digital Quadrado

ADQCT



Saca Implante

SIMP



Torquímetro 10 a 80 Ncm

TORQ

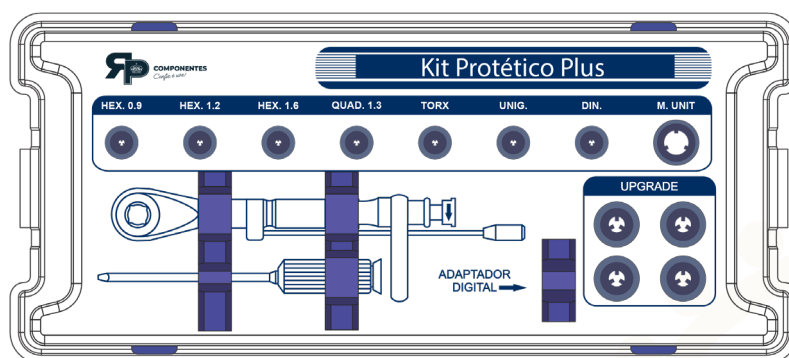
## KIT PROTÉTICO PLUS

KITPRP

EKPP	Estojo Kit Protético Plus
CTH09M	Chave Torquímetro Hexagonal 0.9mm Média
CTH12M	Chave Torquímetro Hexagonal 1.2mm Média
CTQ13M	Chave Torquímetro Quadrada 1.3mm Média
CDQ13EL	Chave Digital Quadrada 1.3mm Extra Longa
CTH16M	Chave Torquímetro Hexagonal 1.6mm Média
CTSTM	Chave Torquímetro Torx Média
CTUGM	Chave Torquímetro Unigrip Média
CTDIM	Chave Torquímetro DI Média
CTMUM	Chave Torquímetro p/ Multi-Unit Média
ADQCT	Adaptador Digital Quadrado para Chave de Torquímetro
300799F	Torquímetro 10 a 80N.cm



TAMPA

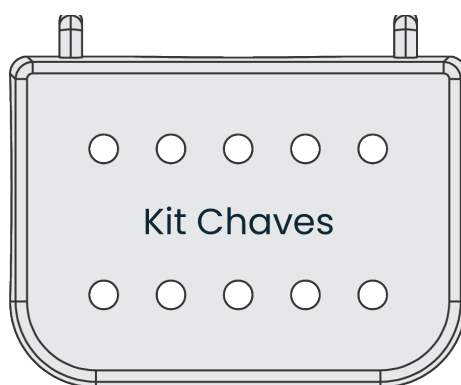


BASE

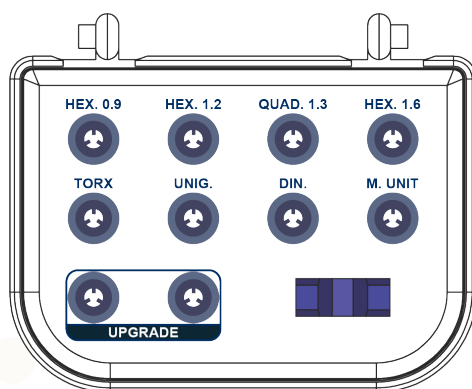
## KIT CHAVES

KITCH

EKC	Estojo Kit Chaves
CTH09M	Chave Torquímetro Hexagonal 0.9mm Média
CTH12M	Chave Torquímetro Hexagonal 1.2mm Média
CTQ13M	Chave Torquímetro Quadrada 1.3mm Média
CTH16M	Chave Torquímetro Hexagonal 1.6mm Média
CTSTM	Chave Torquímetro Torx Média
CTUGM	Chave Torquímetro Unigrip Média
CTDIM	Chave Torquímetro DI Média
CTMUM	Chave Torquímetro p/ Multi-Unit Média
ADQCT	Adaptador Digital Quadrado para Chave de Torquímetro



TAMPA



BASE



ESTAMOS SEMPRE À DISPOSIÇÃO,  
ENTRE EM CONTATO E TIRE SUAS DÚVIDAS.

